



Padiglione Vietnam / Vietnam Pavilion



EXPO MILANO 2015 / EXPO PAVILLIONS





## AGORÀ

### LOCATION

EXPO 2015 – Agorà

### TYPE OF INTERVENTION

Agorà Pavilion – Castello Sforzesco

### ARCHITECTURAL DESIGN

aMDL - Arch. De Lucchi

### STRUCTURAL PROJECT

SPS Progetti

### FEATURES

400 mq – 1 Building Level

### TOTAL WEIGHT STRUCTURES

28 tons

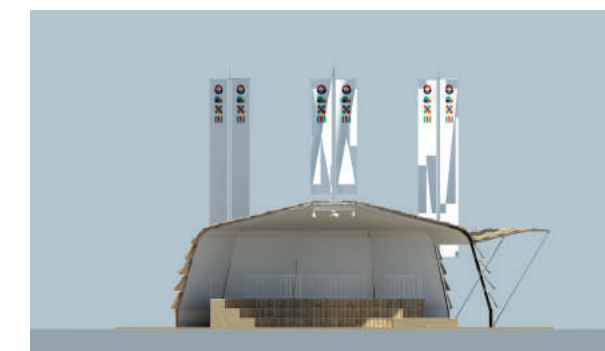
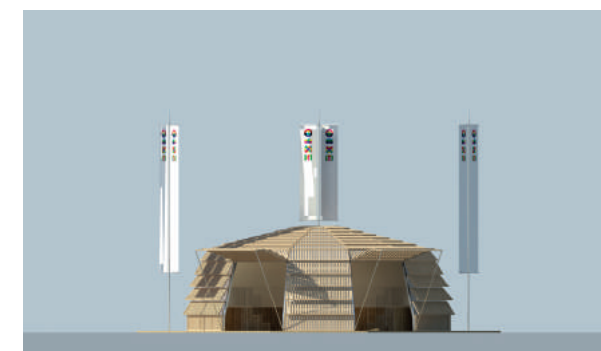
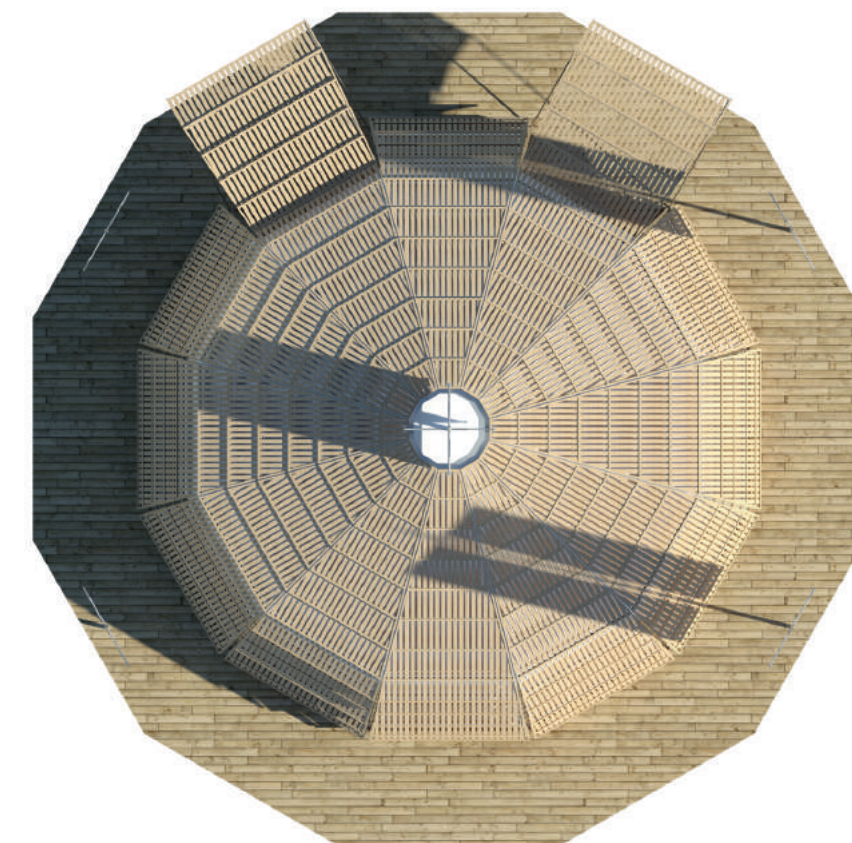
### START / END REALIZATION

Dicember 2013

### TOTAL MAN-HOURS

IN WORKSHOP: 400 h

IN SITE CONSTRUCTION: 300 h





# ITALIAN PAVILION



**LOCATION**  
EXPO 2015 Italy Pavilion

**TYPE OF INTERVENTION**  
Italy Pavilion

**ARCHITECTURAL DESIGN**  
Nemesi & Partners

**STRUCTURAL PROJECT**  
Bms Progetti

**FEATURES**  
13.000 mq – 6 Building Levels

**TOTAL WEIGHT STRUCTURES**  
1960 tons

**START / END REALIZATION**  
June 2014 / April 2015

**TOTAL MAN-HOURS**  
IN WORKSHOP: 36200 h  
IN SITE CONSTRUCTION: 31600 h







## ITALIAN PAVILION – BUILDINGS OF CARDO



**LOCATION**  
EXPO 2015 Italy Pavilion, Buildings of Cardo

**TYPE OF INTERVENTION**  
Italy Pavilion

**ARCHITECTURAL DESIGN**  
Nemesi & Partners

**STRUCTURAL PROJECT**  
Bms Progetti

**FEATURES**  
10700 mq – 3 Building Levels

**TOTAL WEIGHT STRUCTURES**  
980 tons

**START / END REALIZATION**  
Dicember 2014 / March 2015

**TOTAL MAN-HOURS**  
IN WORKSHOP: 10.250 h  
IN SITE CONSTRUCTION: 7.800 h





# HOLY SEE PAVILION



**LOCATION**  
EXPO 2015 Holy See Pavilion

**TYPE OF INTERVENTION**  
Holy See Pavilion

**ARCHITECTURAL DESIGN**  
Arch. AAAA Quattro Associati

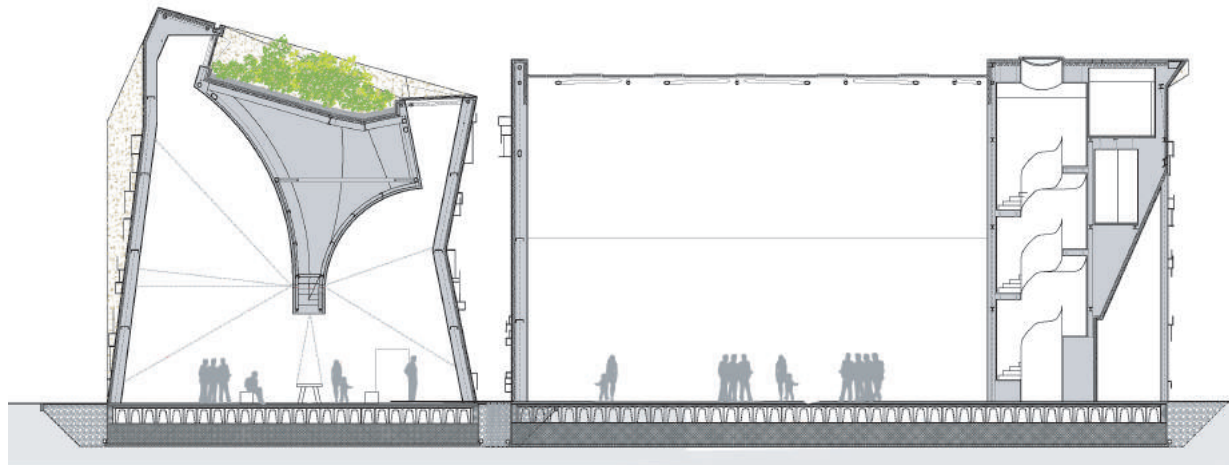
**STRUCTURAL PROJECT**  
Biesse Consulting

**FEATURES**  
1.200 mq – 3 Building Levels

**TOTAL WEIGHT STRUCTURES**  
105 tons

**START / END REALIZATION**  
Dicember 2014 / February 2015

**TOTAL MAN-HOURS**  
IN WORKSHOP: 2.200 h  
IN SITE CONSTRUCTION: 2.600 h







## VIETNAM PAVILION

### LOCATION

EXPO 2015 Vietnam Pavilion

### TYPE OF INTERVENTION

Vietnam Pavilion

### ARCHITECTURAL DESIGN

Arch. Vo Trong Nghia-Proger

### STRUCTURAL PROJECT

BMS Progetti

### FEATURES

1.000 mq – 2 Building Levels

### TOTAL WEIGHT STRUCTURES

85 tons

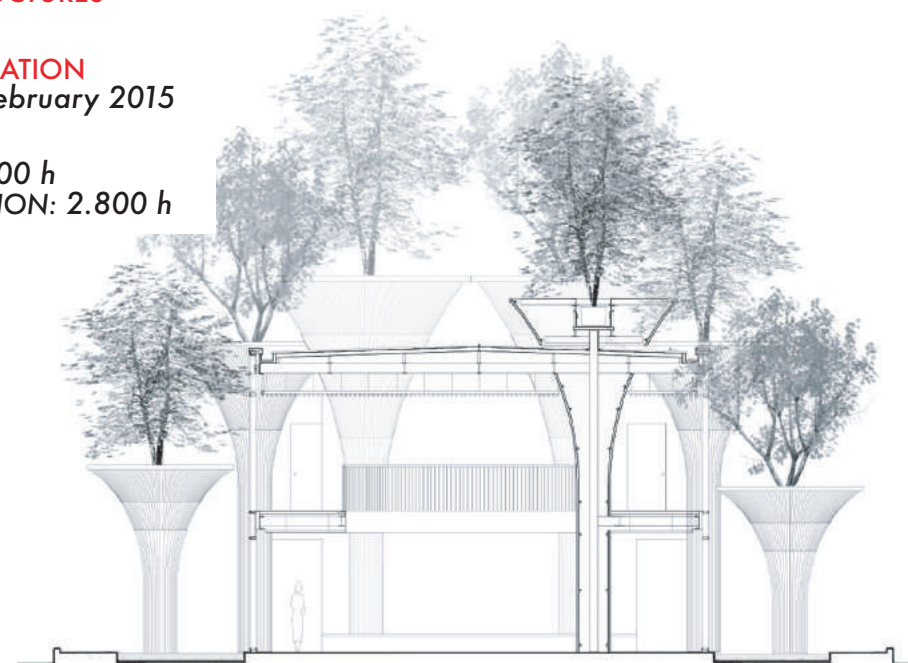
### START / END REALIZATION

Dicember 2014 / February 2015

### TOTAL MAN-HOURS

IN WORKSHOP: 1.300 h

IN SITE CONSTRUCTION: 2.800 h





## ECUADOR PAVILION



**LOCATION**  
EXPO 2015 Ecuador Pavilion

**TYPE OF INTERVENTION**  
Ecuador Pavilion

**ARCHITECTURAL DESIGN**  
Studio Zorrozua Asociados

**STRUCTURAL PROJECT**  
De Luca Associati

**FEATURES**  
800 mq – 3 Building Levels

**TOTAL WEIGHT STRUCTURES**  
80 tons

**START / END REALIZATION**  
March 2015 / April 2015

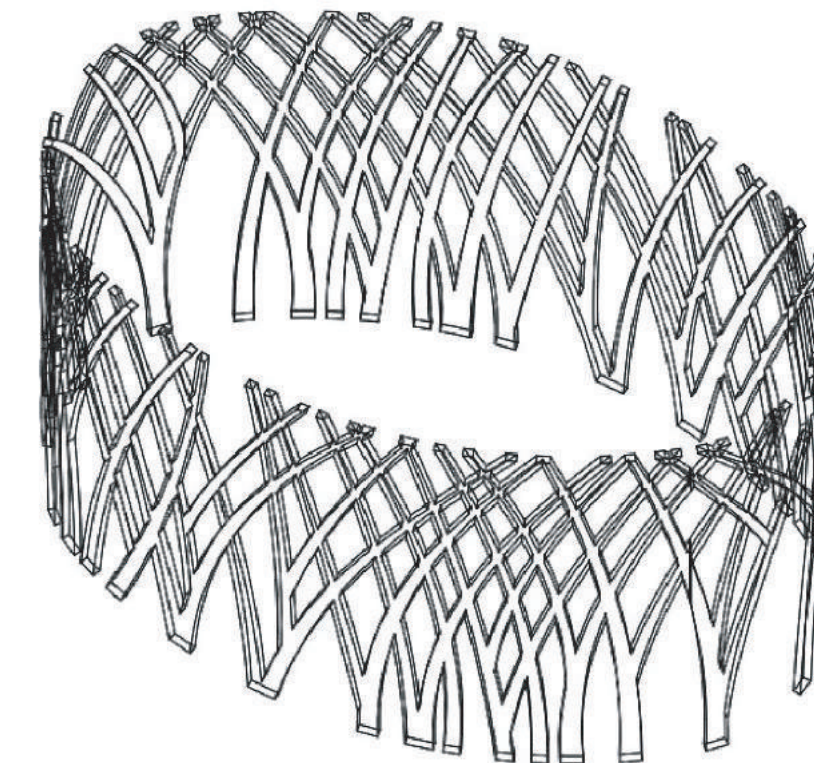
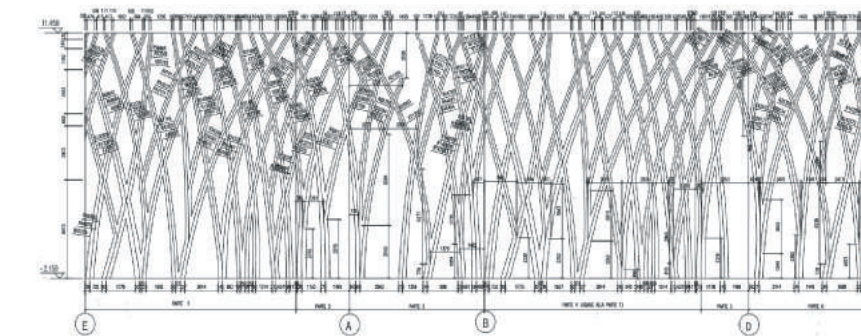
**TOTAL MAN-HOURS**  
IN WORKSHOP: 1.30 h  
IN SITE CONSTRUCTION: 1.400 h







## CCUP PAVILION



### LOCATION

EXPO 2015 China Corporate United Pavilion

### TYPE OF INTERVENTION

CCUP Pavilion

### ARCHITECTURAL DESIGN

Tongji University, Shanghai

### STRUCTURAL PROJECT

MAP

### FEATURES

3.600 mq – 6 Building Levels

### TOTAL WEIGHT STRUCTURES

680 tons

### START / END REALIZATION

November 2014 / March 2015

### TOTAL MAN-HOURS

IN WORKSHOP: 11.400 h

IN SITE CONSTRUCTION: 29.300 h



## CHILDREN PARK



**LOCATION**  
EXPO 2015 Children Park

**TYPE OF INTERVENTION**  
Fences Children Park

**ARCHITECTURAL DESIGN**  
MM Metropolitana Milano

**STRUCTURAL PROJECT**  
MM Metropolitana Milano

**FEATURES**  
1.400 linear mt

**TOTAL WEIGHT STRUCTURES:**  
4 tons

**START / END REALIZATION**  
February 2015 / March 2015

**TOTAL MAN-HOURS**  
IN WORKSHOP: 700 h  
IN SITE CONSTRUCTION: 600 h



## EXPO MILANO 2015

**TOTAL WEIGHT STRUCTURES:**  
3.894 Tons

**TOTAL SURFACE AREA:**  
30.700 mq

**TOTAL MAN-HOURS IN WORKSHOP:**  
63.350 H

**TOTAL MAN-HOURS  
IN SITE CONSTRUCTION:**  
76.100 H

