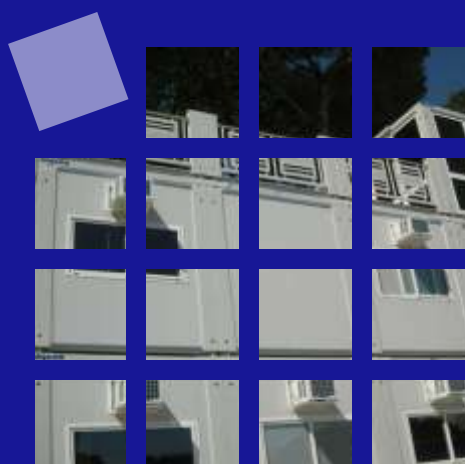


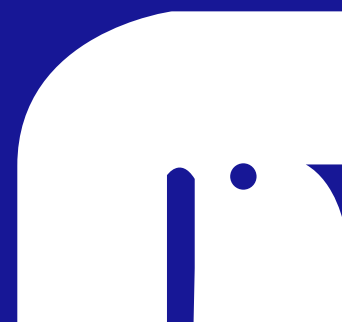
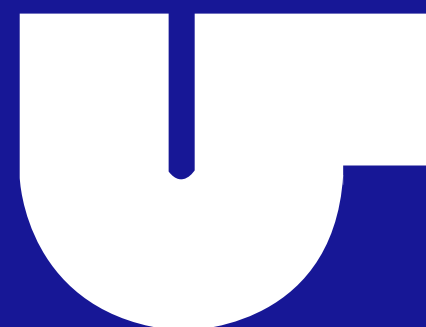
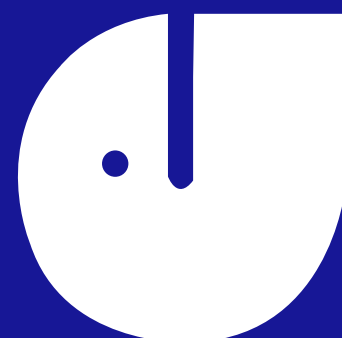
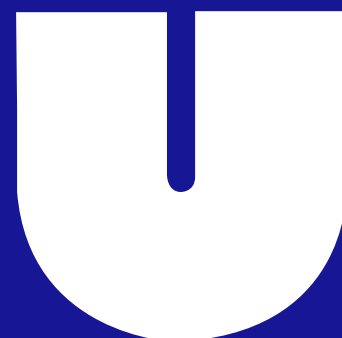
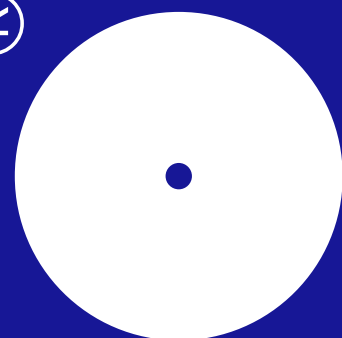
A L G E C O E X P O R T
m o d u l a r c o n s t r u c t i o n



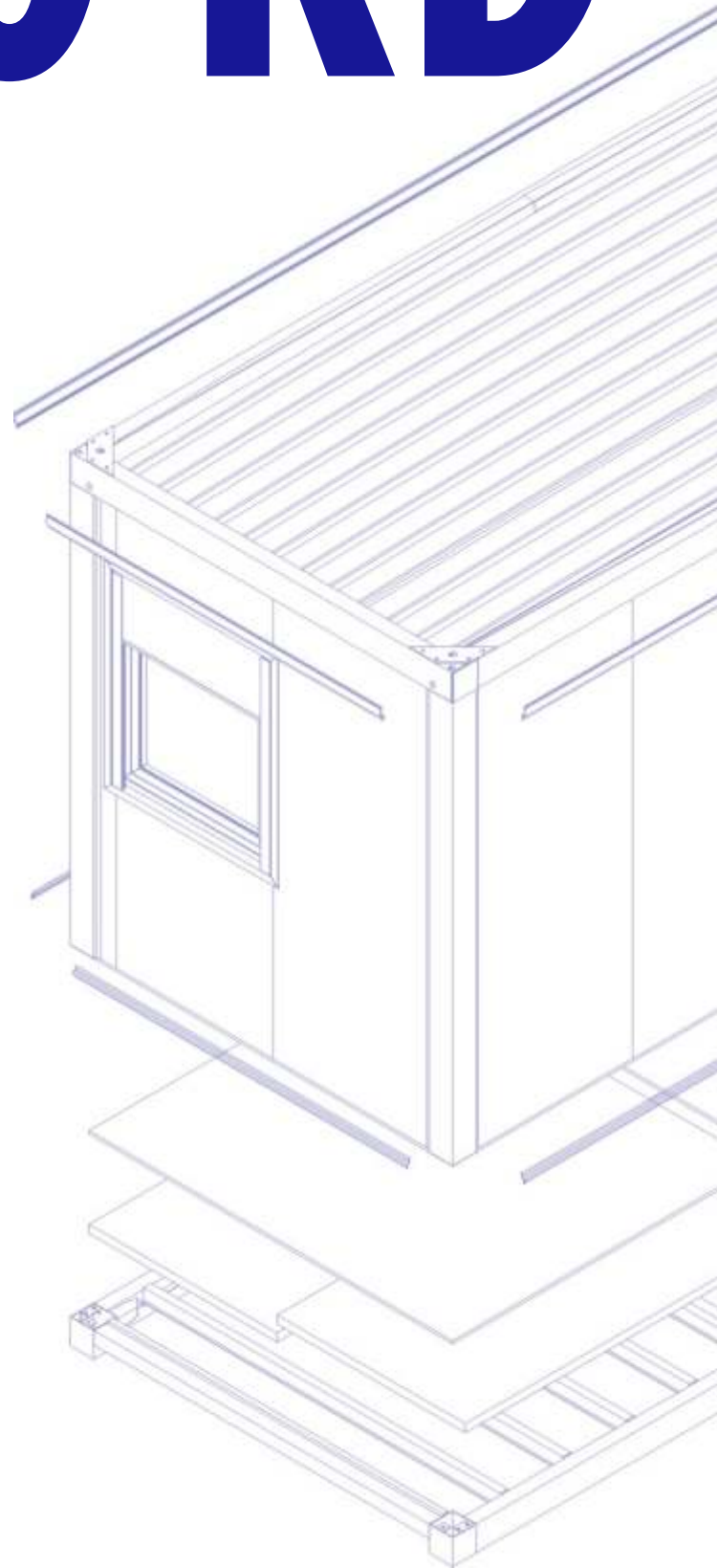
F R E E Y O U R
S P A C E

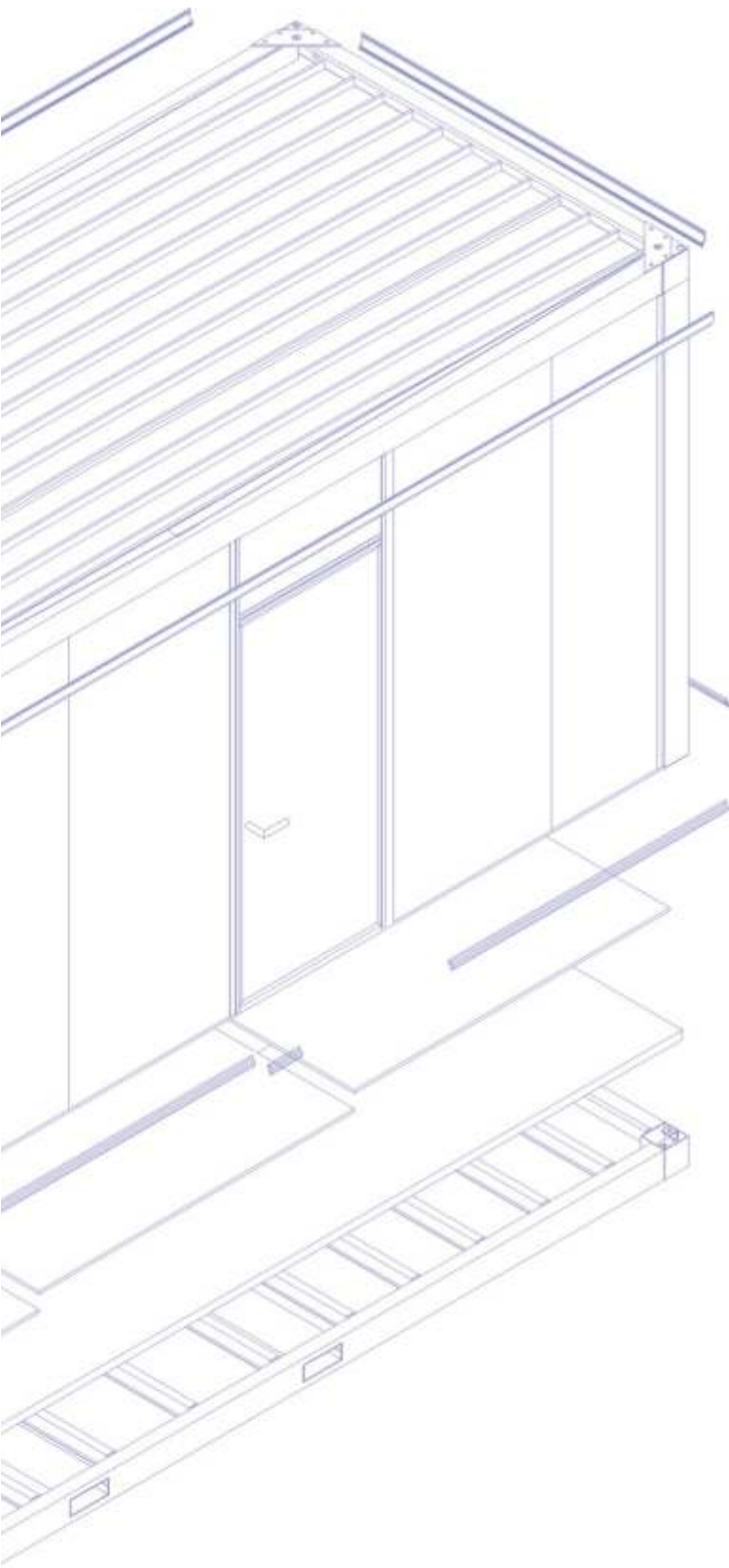
6000 KD

algeco®



6000 KD





A world supplier of hired, modular space. Algeco designs, produces, hires and sells modular constructions for the widest ranging uses. It builds offices, schools, hospitals, canteens and dormitories for clients such as local governments, events organizers, civil defence, building companies and industry. Personalised solutions gained from listening to clients' needs and which each time have a fresh uniqueness. Solutions researched with the focus and attention of a partner who makes available its technical expertise, the result of decades of experience in the area, to create something which is absolutely unique and with a functional and flexible configuration. Our mission is to create new living spaces. Building temporary, semi-temporary or permanent architectures with the dual aim of function and attractiveness is our daily task. We are able in a very short time to create the most widely varying floor plans, from the simplest to the most ambitious. From fifteen to hundreds of square metres and over. Algeco technical department examines the spaces available, assesses your needs and proposes the ideal configuration.



TECHNICAL SPECIFICATIONS 6000 KNOCK DOWN

MODULAR FACILITY

The structure colour is RAL 7035 (pale grey) with external dimensions 6000 x 2440 H.2890 (internal dim. 5880 x 2320 H.2500).

The structure is modular and can be both assembled either on a solid base or on a pedestal and may go up to until two levels (ground plus one). The units may also be assembled end to end or side to side, allowing the greatest flexibility in the design of the building.

STRUCTURES

BASEMENT STRUCTURE

- Tubular steel pieces of 160 x 80 x 3 mm.
 - Crosspieces in Omega profile 15x70x15 th.15/10 mm.
 - The weight capacity is of 250 kg/sqm. This may be increased but will require special modifications during the production stage.
 - The steel profile is S235JR.
 - The basement structure's colour is Ral7035
 - The connections lateral profiles/crosspieces are made with M12 screws for external structure and with self-driving screws for implantation of Omega.
- The basement is self-supporting, so it can be set on pedestals whose dimensions are specified in the drawings. The upper part is made of 18 mm water-repellent chipboard covered by PVC placed on site. The pavement is insulated through glass wool under the chipboard in order to protect the wood and give the structure a higher insulation level.

ROOF STRUCTURE

- Side profiles, each section 20/10 thick
 - Rectangular tubular crosspieces in 50x30x1,5 mm
 - Profile steel is S235JR.
 - The weight capacity of the roof is 120 kg/sqm
 - Flat type with a 3% incline
 - The roof structure is painted in colour RAL7035
 - The lateral profiles/crosspieces are made with M12 screws for the external structure with self-driving screws for the securing of roof crosspieces.
- The upper part is made of 6/10 thick EGB401 profile corrugated sheet-iron. The lower part of the roof is made with staves in pre-painted galvanized sheet-iron, 5/10mm thick. The middle part is filled by glass wool, 50 mm thick and 12 Kg/mc density. Thermic roof insulation $K = 0,711 \text{ Kcal/sqm h } ^\circ\text{C}$.

COLUMNS

The columns are made of cold rolled S235JR steel sections, particular shape, 30/10 mm thick with antirust and polyurethane enamel color RAL 7035.

Internal height: 2500 mm

They are equipped of an inner profile to joint RAL 9002.

Inside the columns there are 4 PVC pipes Ø 50 mm for waters waste.

WALLS

EXTERNAL WALLS

The external walls are realized with sandwich panels with the following characteristics:

- the panel thickness 50 mm ($K=0.398 \text{ K/SQM h}^\circ\text{C circa}$);
- the panel is made of two sheet iron sides, the sheet iron is hot rolled and prepainted on the external side, insulation is achieved through polyurethane;
- the external side is embossed and white-grey color. Other options of finish are available but these are not-standard.

INTERNAL WALLS

They are made with the same panels used for the external walls.

DOORS AND WINDOWS

External/internal doors

Steel frame with a double-paneled shutter, dim 971x2100. The door is lockable and is supplied with three keys; colour RAL 9010

Windows dim. 971x1200 with double glass and roll-up shutter, steel material, color RAL 9010.

ELECTRICAL SYSTEM

Realized according with the current rules, with reference to law 46/90 and composed by:

- IP55 wall control unit
- Magneto-thermal differential switch
- Automatic magneto-thermal switch – socket line
- Magneto-thermal switch - light line
- Lights 1x36 W
- IP55 socket blocks
- Standard electrical system: 220 Volt

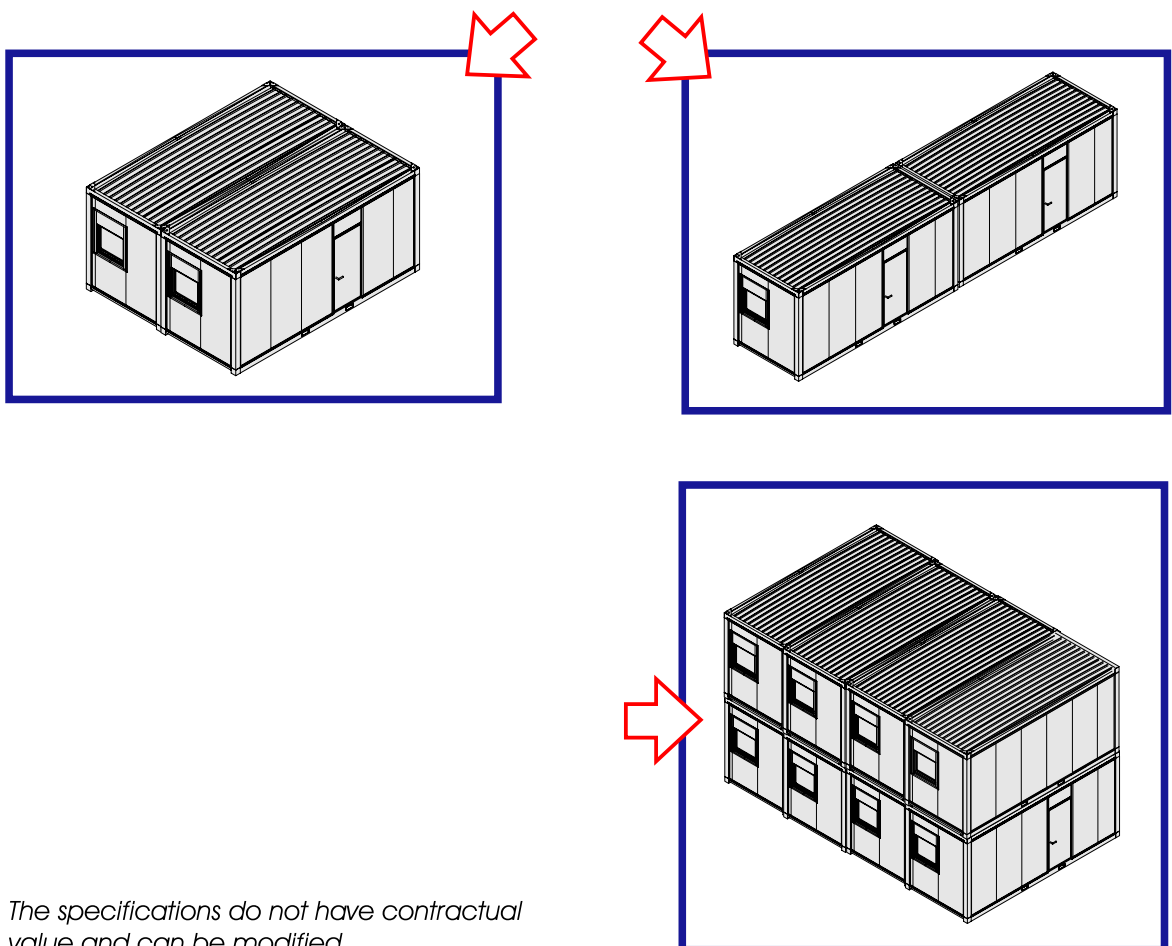
ASSEMBLY

6000 KD facilities can be horizontally assembled without limits, on the short or long side, and can be superimposed on two levels.

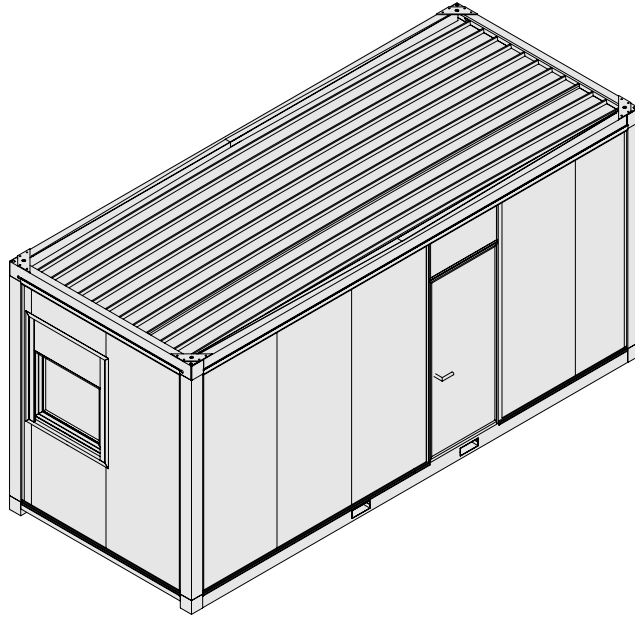
OPTIONS

- H.3090 (internal dim. 5880 x 2320 **H.2700**) only one floor (G)
- The external or internal walls in rock wool
- Windows or doors in PVC
- Fire insulation
- To facilitate transport and moves, in the beams of the plinth there are present holes for the pitchforks.
- Electrical system: 110 volt

POSSIBILITIES

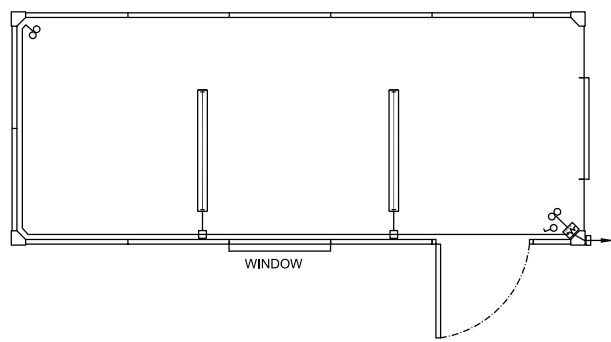
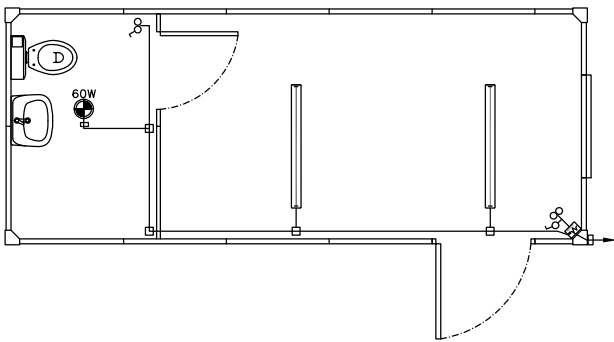


The specifications do not have contractual value and can be modified from the ALGECO S.p.A without notice.



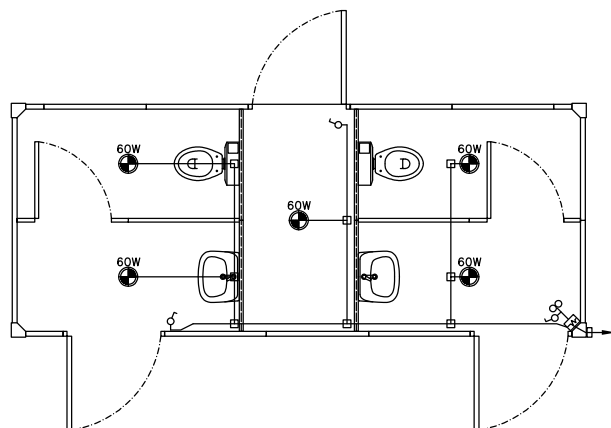
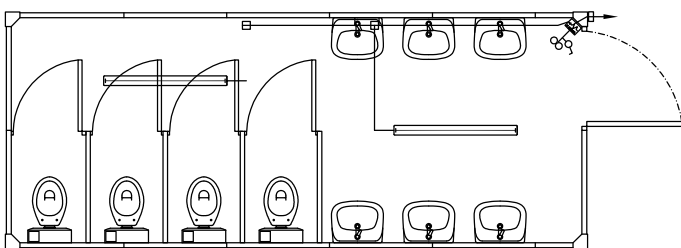
WC UFF Module

Standard Module

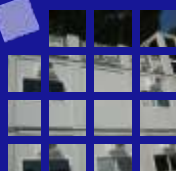


WC Woman Module

WC VIP Module



6000 KD



algeco®

Algeco S.p.A.

Via Enrico Mattei, 2 - Frazione Divisa

27020 Marcignago (PV)

Tel. + 39 0382 92 96 22 | Fax + 39 0382 92 19 28

www.algeco.it

info.it@algeco.com

commerciale.it@algeco.com



Algeco S.p.A.

Via Flaminia Vecchia, 844

00191 Roma

Tel. +39 06-33219863 / Fax +39 06-3333625

www.algeco.it

export.it@algeco.com

