

MUSEO DEGLI SCAVI A SIRACUSA

IPOTESI PER LA VALORIZZAZIONE DELLA MEMORIA DEI LUOGHI E PROTEZIONE DEI SITI ARCHEOLOGICI

Tema

- T - 1 Riferimenti Progettuali
- T - 2 Le Ragioni del Progetto

Luogo

- L - 1 Carta Archeologica di Siracusa

Progetto

- P - 1 Planivolumetrico Neapolis -
Scala 1:1000
- P - 2 Componenti e Montaggio
- P - 3 Planivolumetrici Museo
territoriale
- P - 4 Assonometria monometrica -
Scala 1:200
- P - 5 Planimetrie - Scala 1:200
- P - 6 Prospetti e sezione
longitudinale - Scala 1:200

- P - 7 Sezioni trasversali -
Scala 1:200

- P - 7 Sezione Longitudinale -
Scala 1:100

- P - 8 Sezione trasversale -
Scala 1:25

Dettagli

- D - 1 I profili - Scala 1 : 10
- D - 2 Nodo 1 e 2 - Scala 1 : 10
- D - 3 Nodo 3 e 4 - Scala 1 : 10

Modelli

- M - 1 Area di Progetto - Scala 1 :500
- M - 2 Progetto - Scala 1 : 200
- M - 3 Modulo - Scala 1 :50

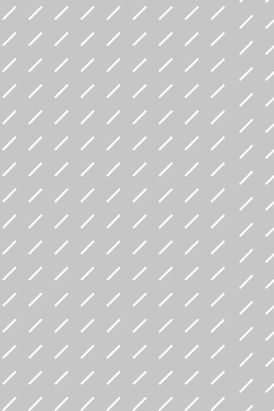
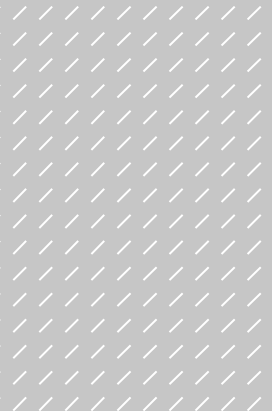
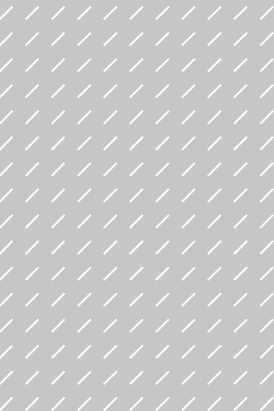
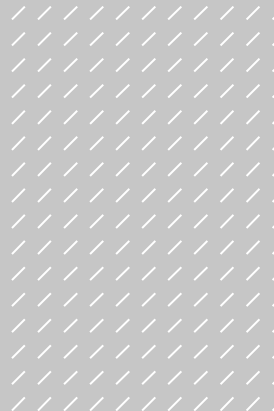
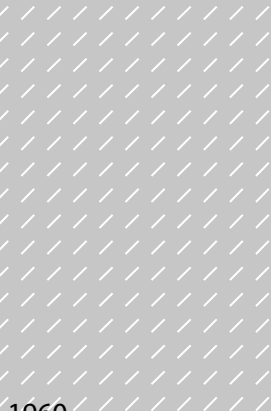
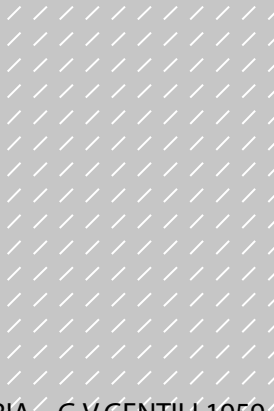
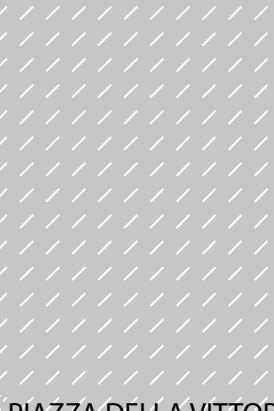
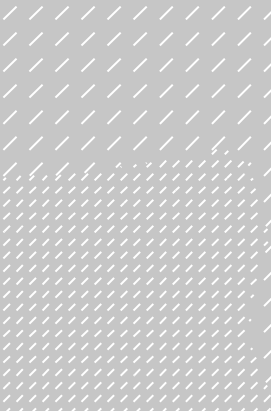
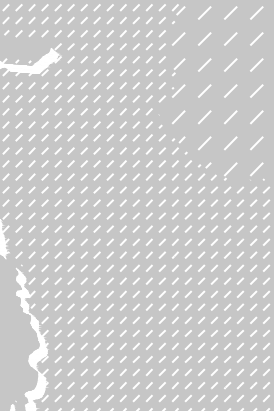
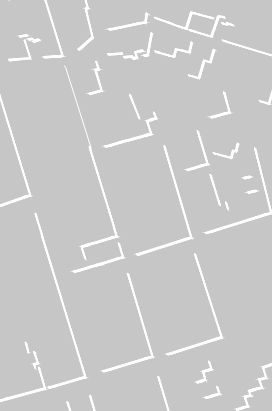
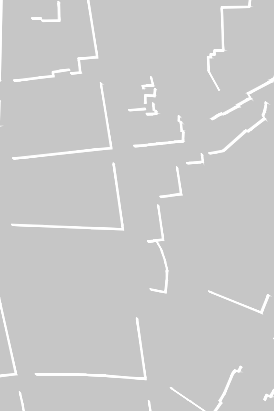
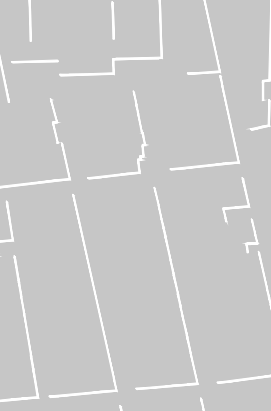
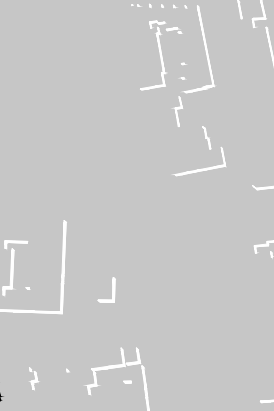
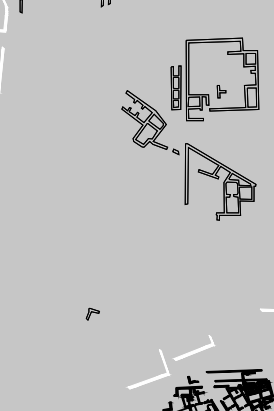
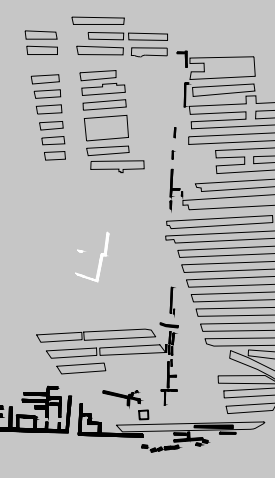
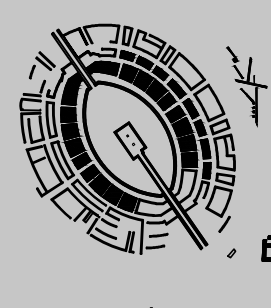
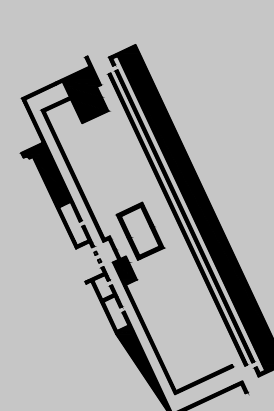
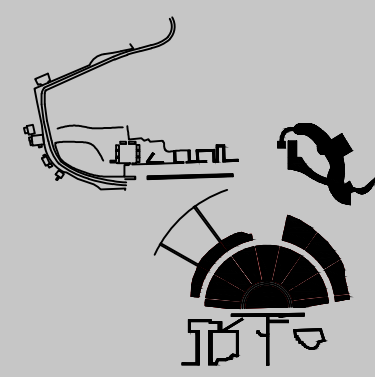
Politecnico di Milano - Scuola di Architettura Civile
Corso di Laurea Magistrale in Architettura - Progettazione Architettonica
Anno Accademico 2012-2013

Autori: Annalucia D'Erchia 782735
Michela Pisani 784341

RELATORE: PROF. Massimo Ferrari
CORRELATORE: ARCH. Claudia Tinazzi

DOCENTI:
Prof. Ing. Alberto Franchi - Teoria e progetto di costruzione e strutture
Prof. Arch. Claudio Sangiorgi - Costruzione delle opere di architettura e Impianti tecnici
Prof. Arch. Giovanna Crespi - Progettazione Architettonica

CONSULENTI:
Prof. Arch. Chiara Dezzi Bardeschi - Restauro Archeologico
Prof. Ing. Vincenzo Petrini - Teoria e progetto di costruzione e strutture
Ing. Francesca Schiavi - Impianti tecnici
Dott.ssa Liliana Gissara - Vicepresidente Italia Nostra - sezione Siracusa
Dott.ssa Ermelinda Storaci - Funzionario Direttivo Archeologo - Museo Archeologico Regionale Paolo Orsi Siracusa
Arch. Pierangelo Sfardini - Verifiche strutture e fabbricati



NEAPOLIS_F. S. CAVALLARI 1834
P. ORSI 1907-1916
H. BULLE 1924
C. ANTI 1946-1947
G.V.GENTILI
L.POLACCO 1970-1976
G. VOZA 1994

EDIFICIO ROMANO_F. S. CAVALLARI 1834

ARTHEMISION_P. ORSI 1919
P. PELEGATTI 1963-63, 1969

ATHENAION_PORSI 1910

PIAZZA DEL DUOMO_PORSI 1910
GVOZA 1999

PIAZZA DELLA VITTORIA_G.V.GENTILI 1959- 1960
G.VOZA 1976-1977

PIAZZALE DELLA STAZIONE_P. ORSI 1904, 1915
B. BASILE 1998

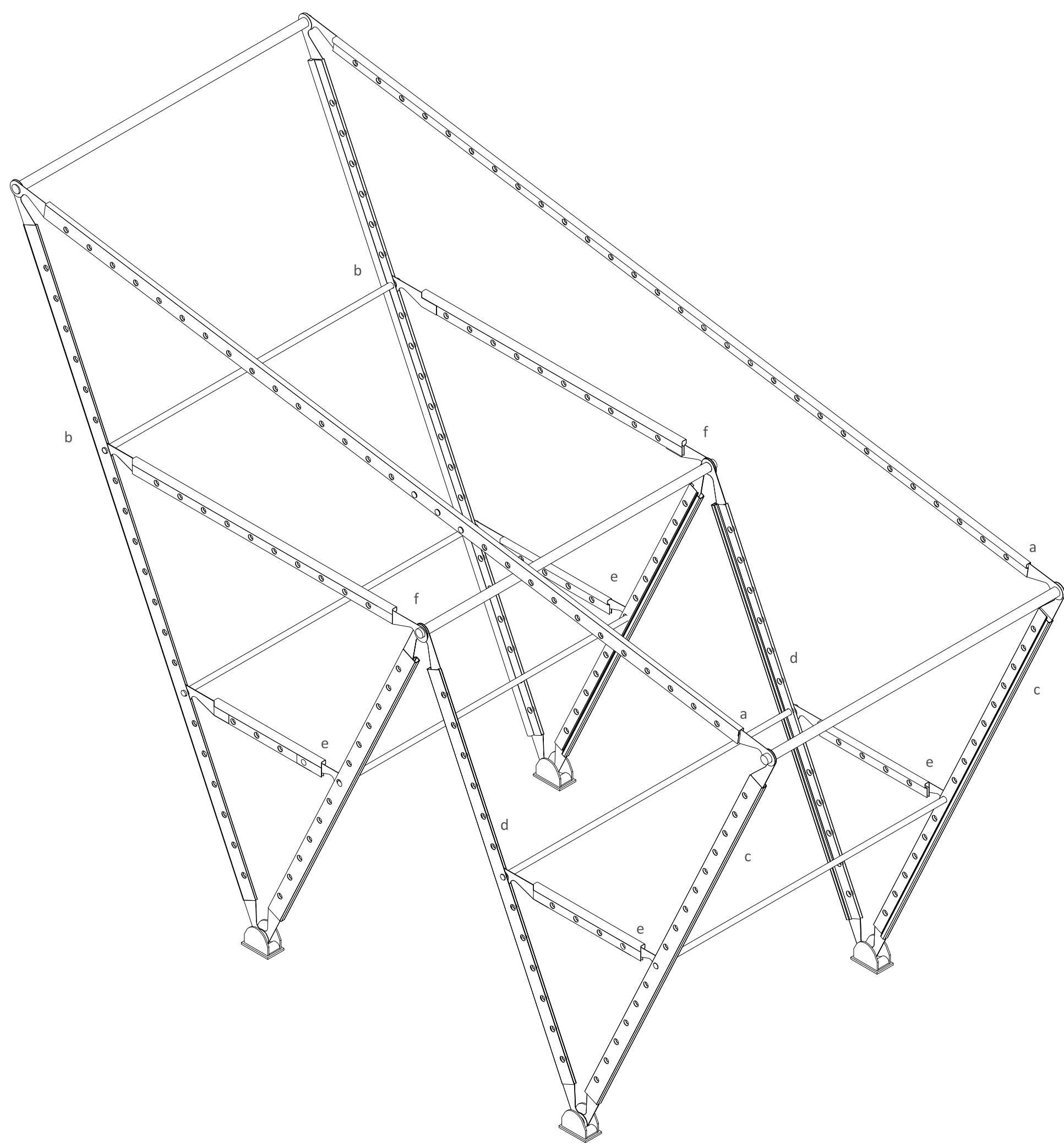
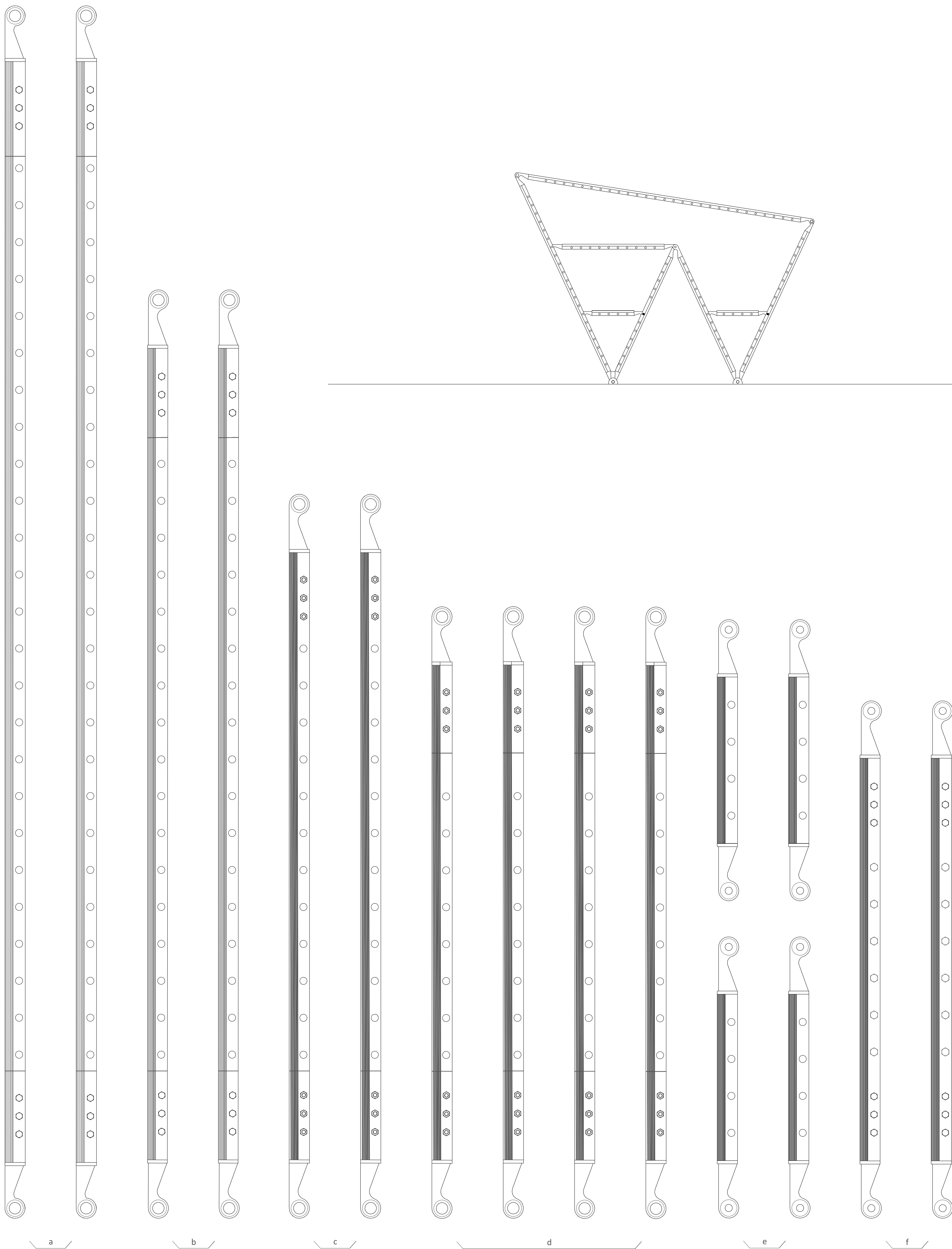
FORO ROMANO_P. ORSI 1910

VIA BENGASI_B.BASILE 2000- 2001

APOLLONION_1858-1942

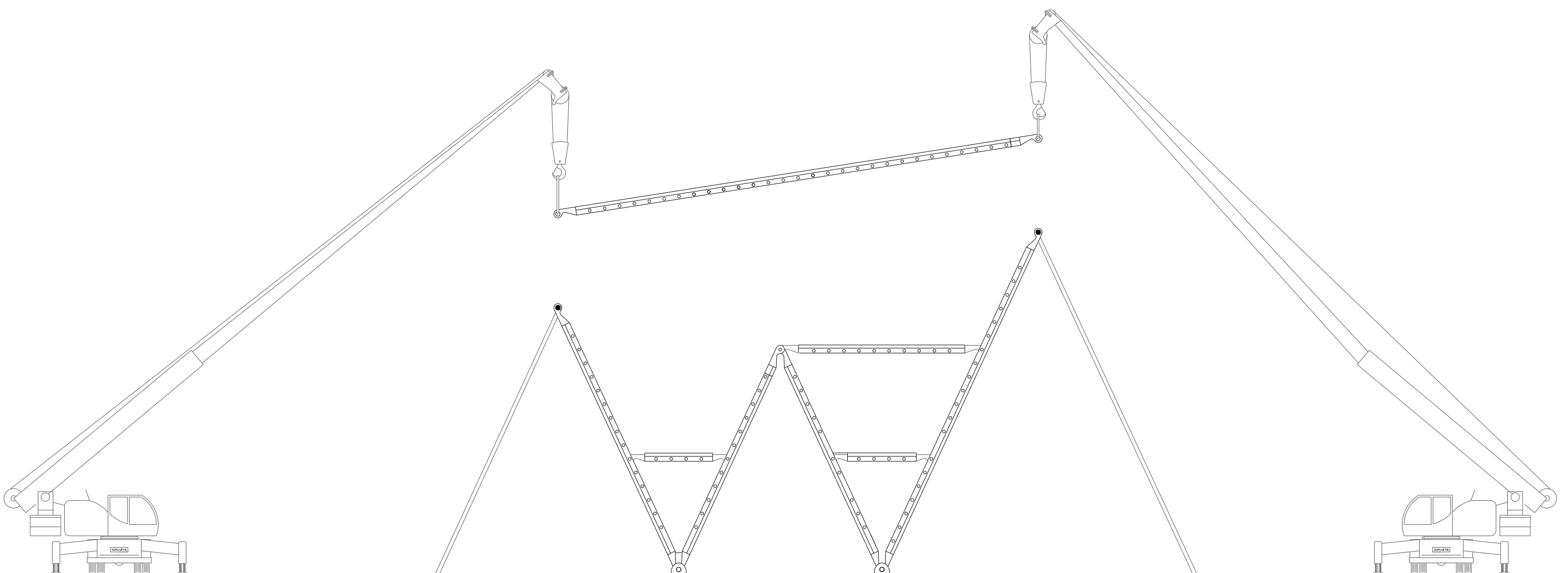
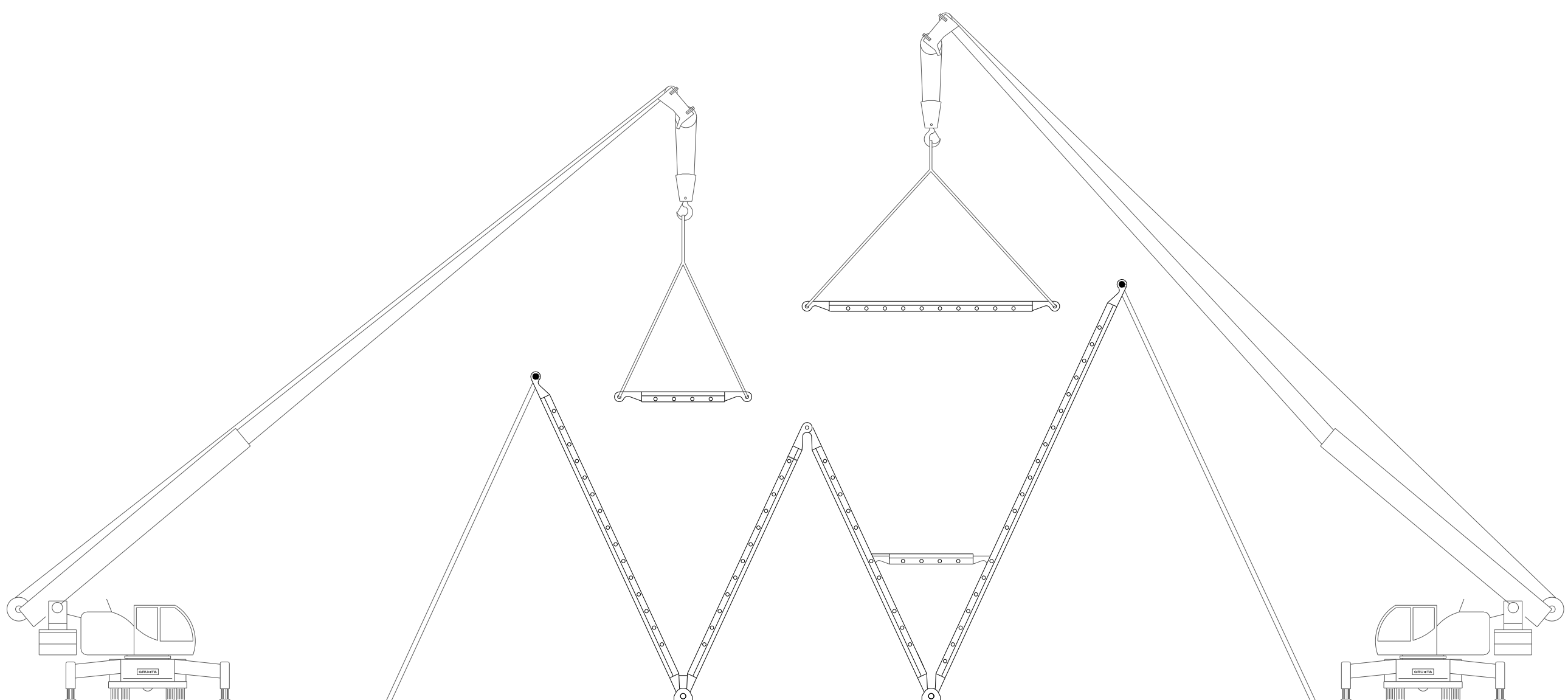
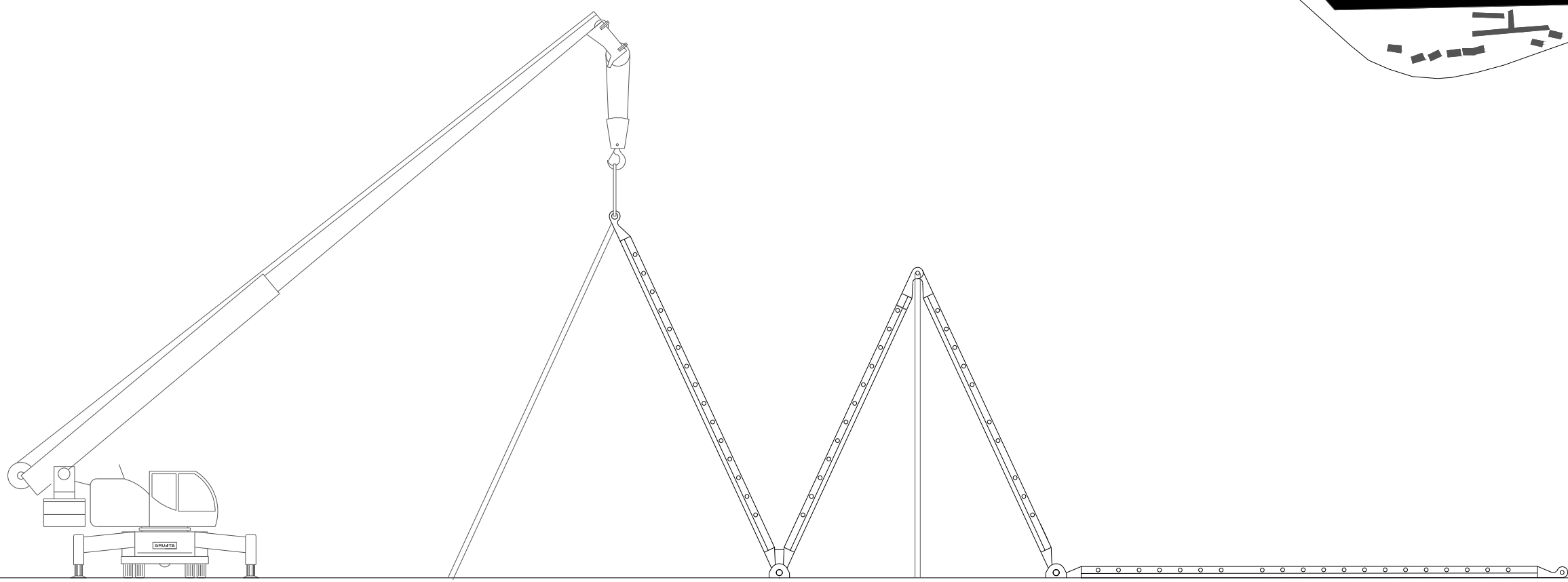
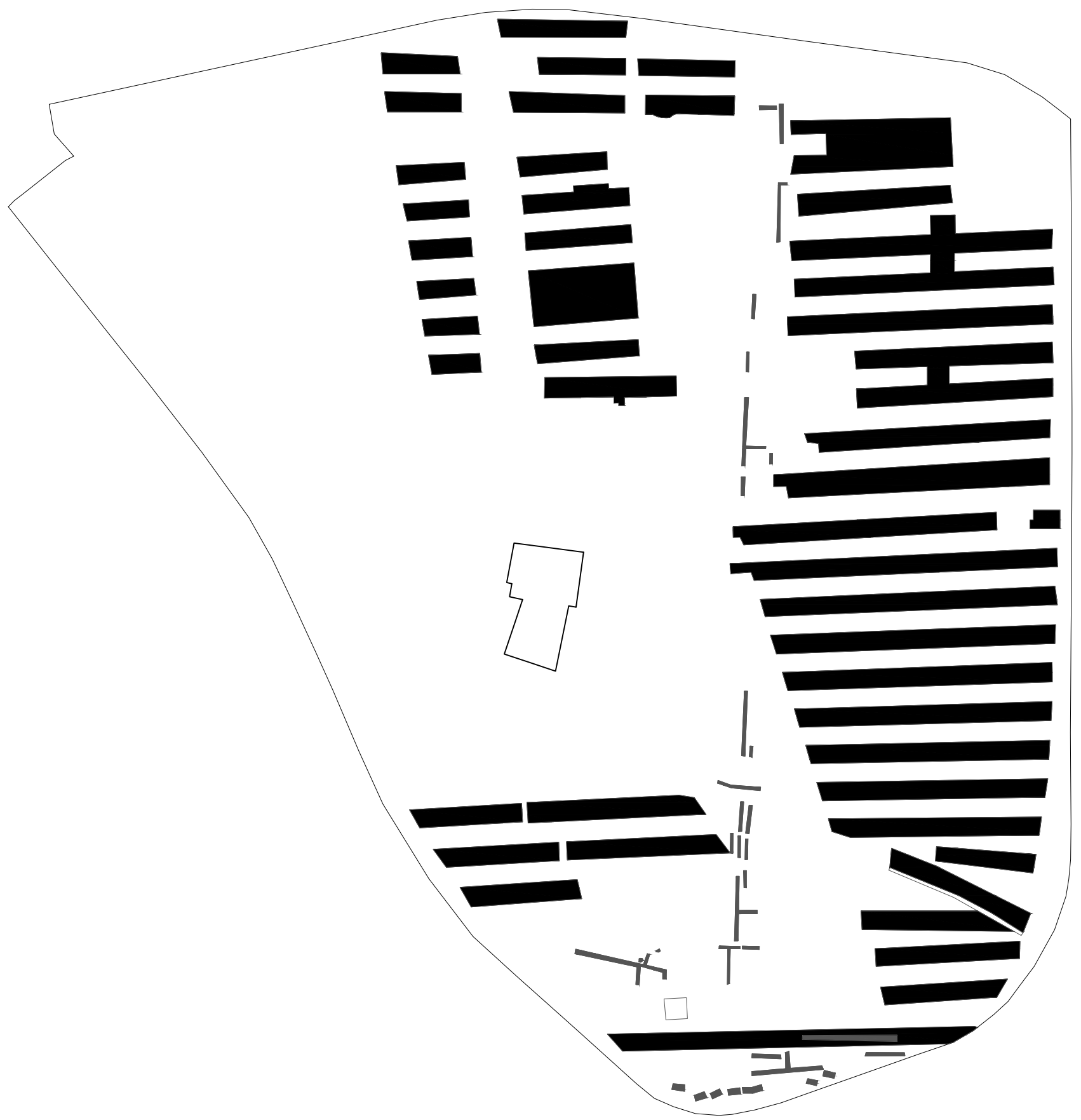
CORSO MATTEOTTI GIA' VIA DEL LITTORIO_P.PELEGATTI 1977-1978

CORTILE DEL PALAZZO DELLA PREFETTURA_P.PELEGATTI 1977-1978
C. CIURCINA 1998



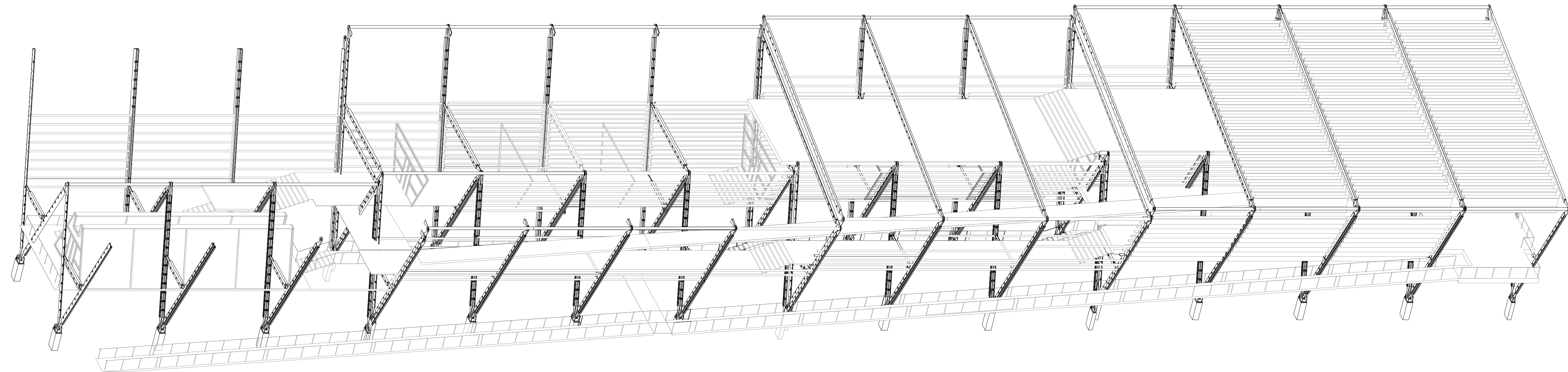
P2

COMPONENTI E MONTAGGIO



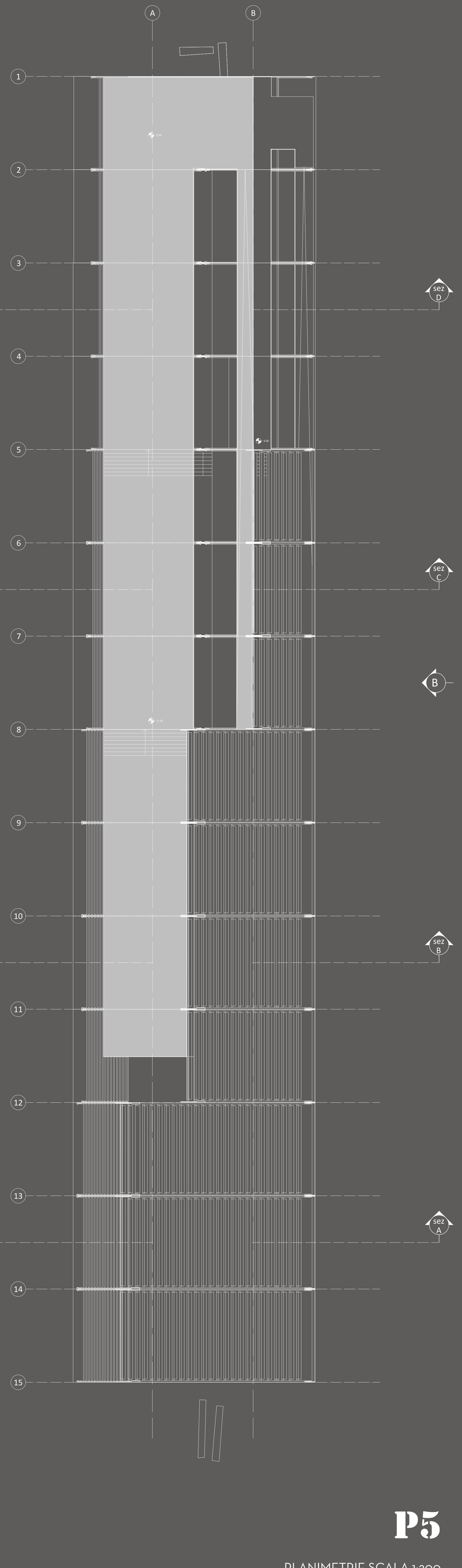
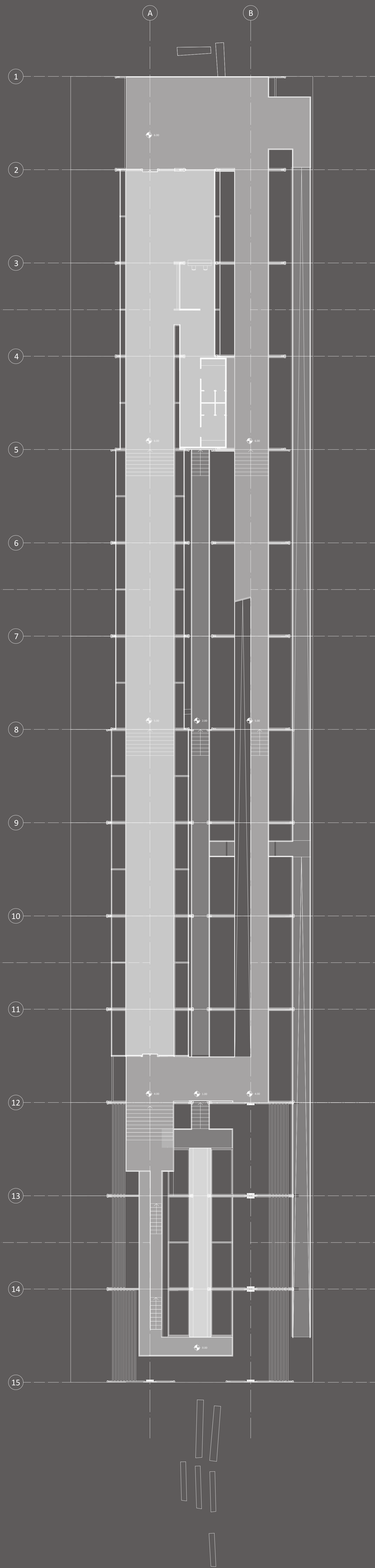
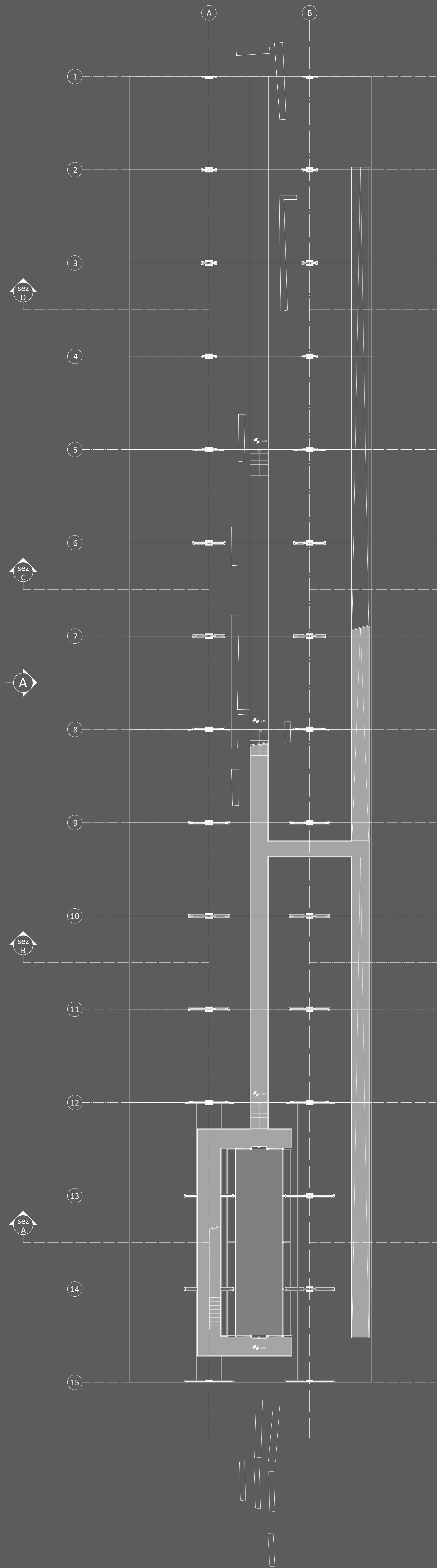
P2

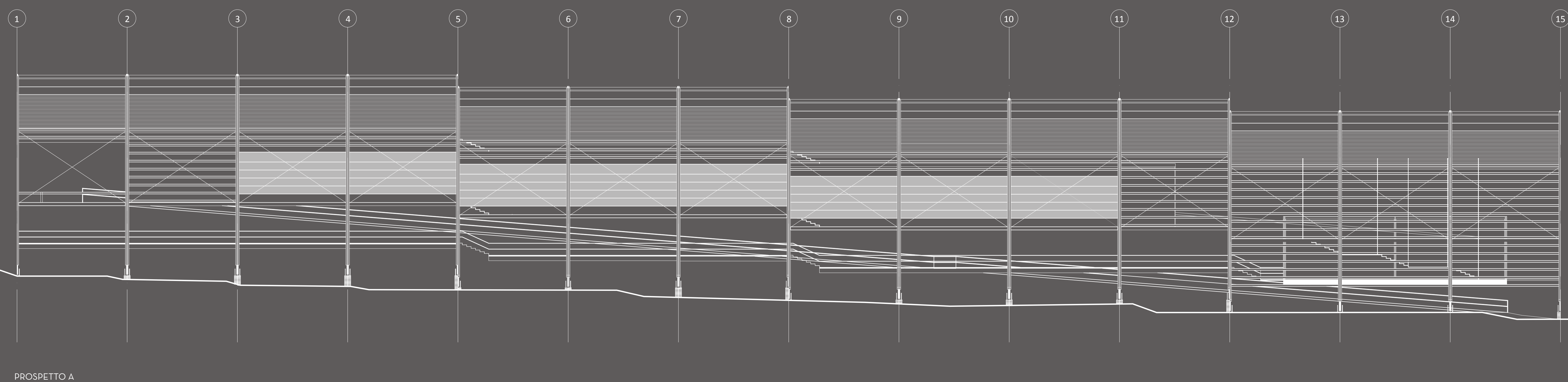
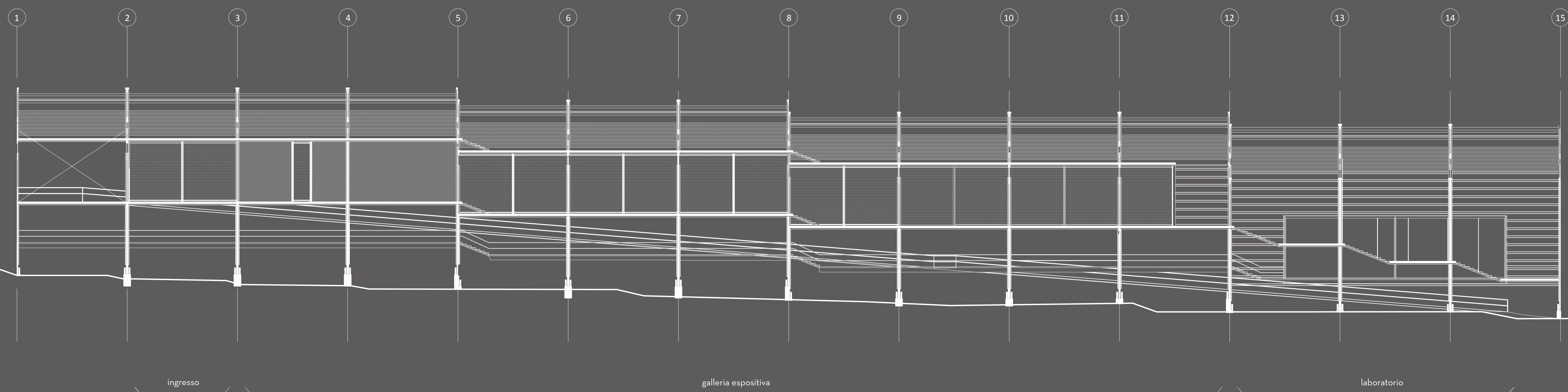
COMPONENTI E MONTAGGIO



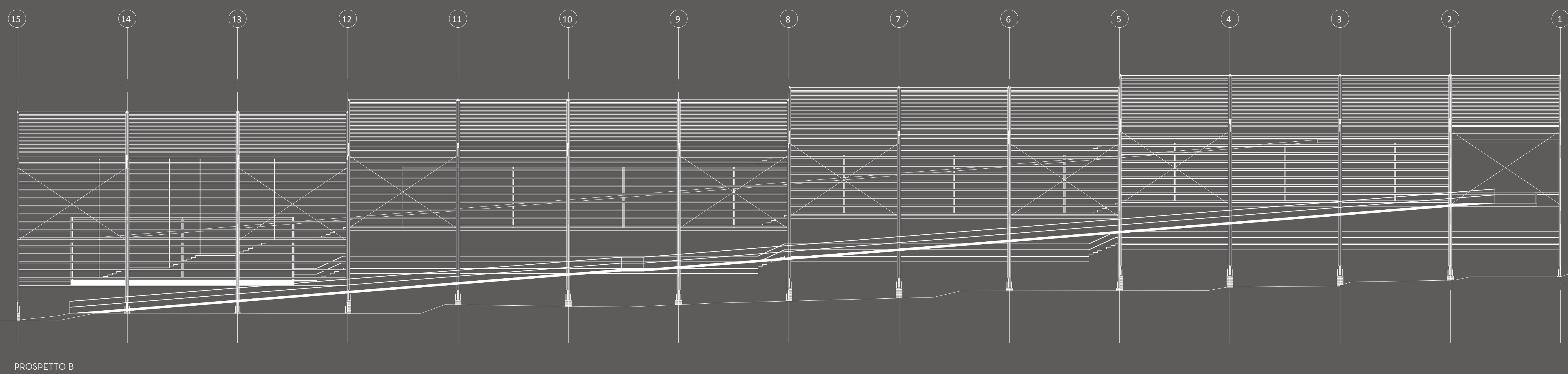
P4

ASSONOMETRIA SCALA 1:200

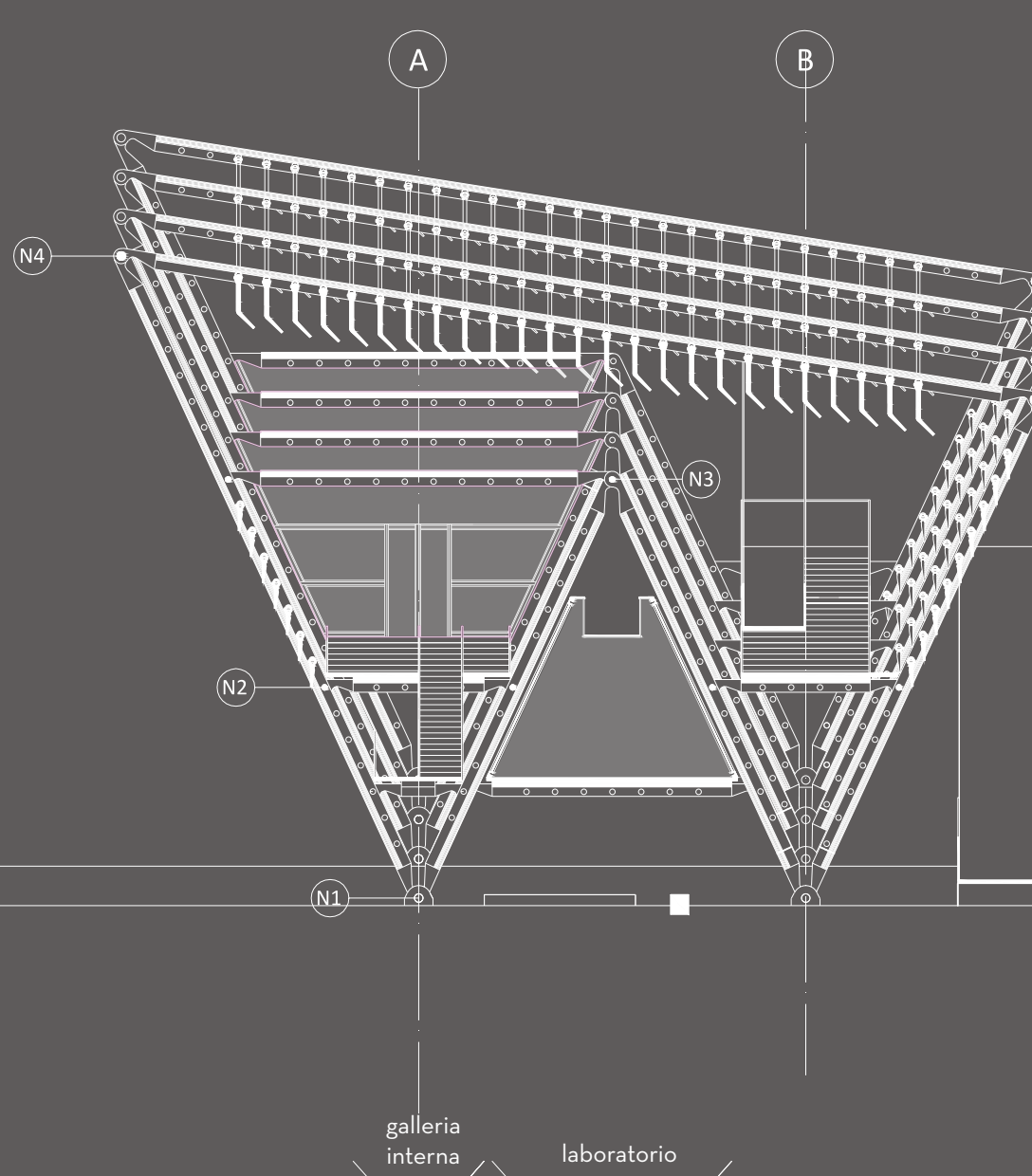
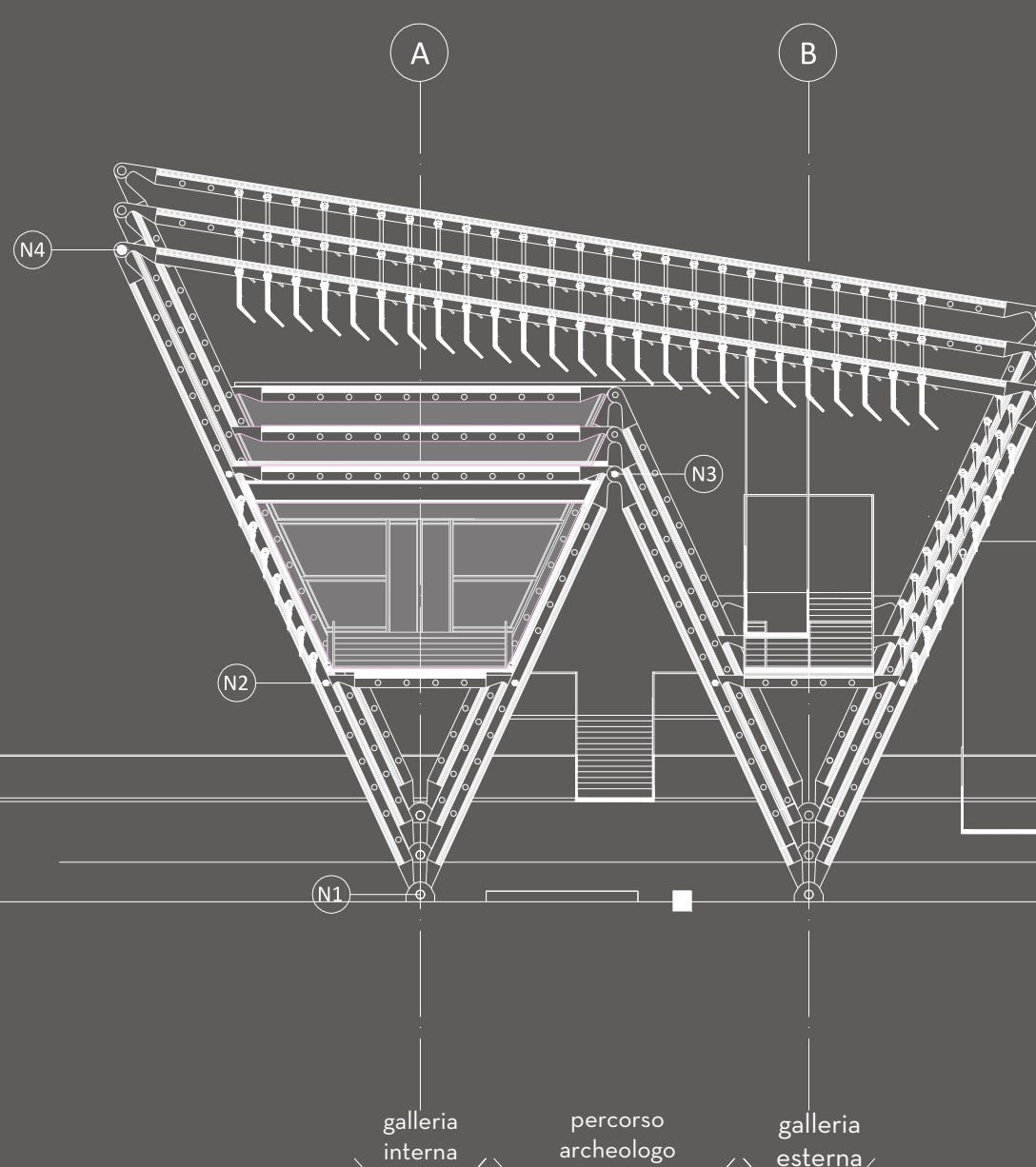
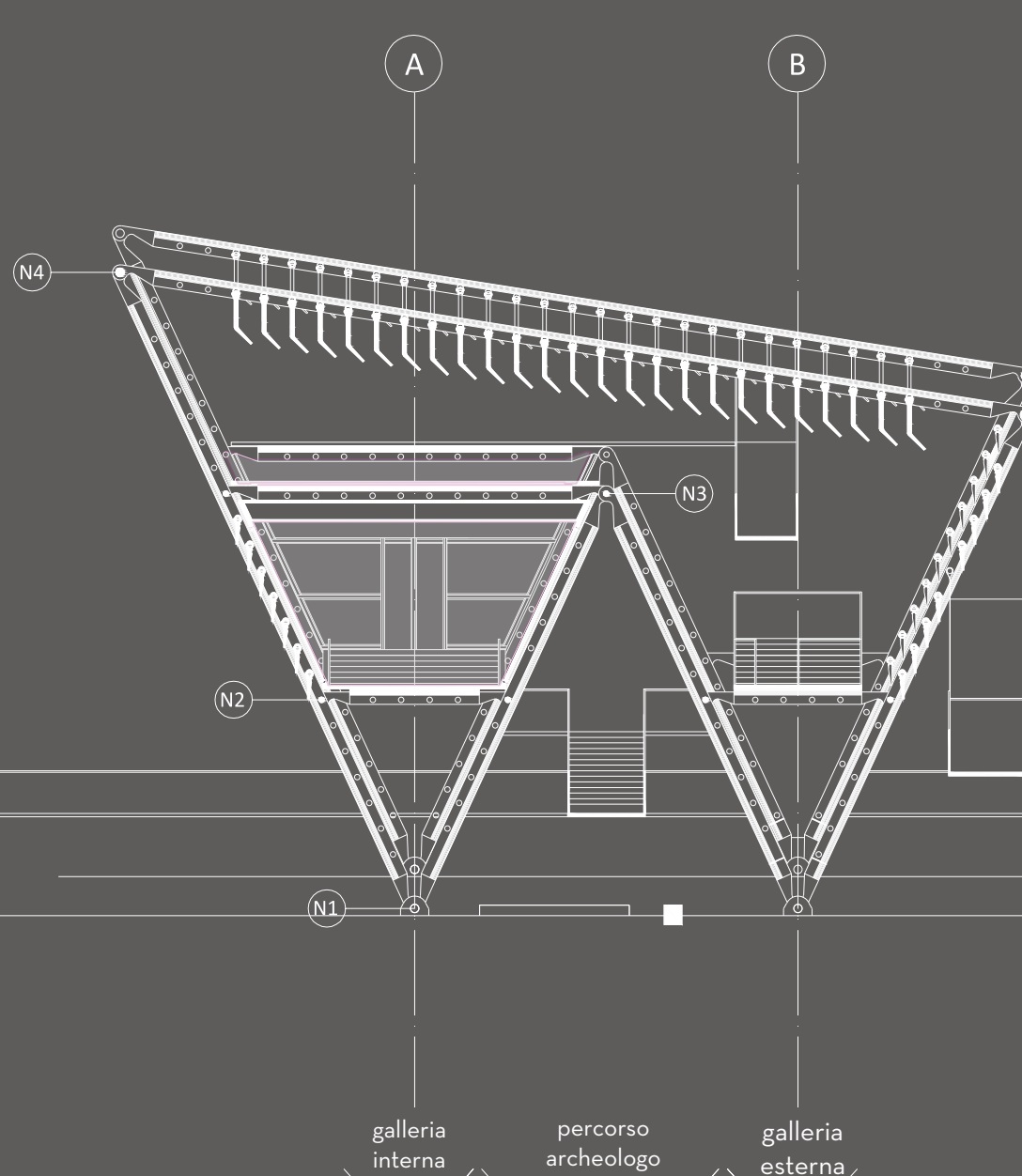
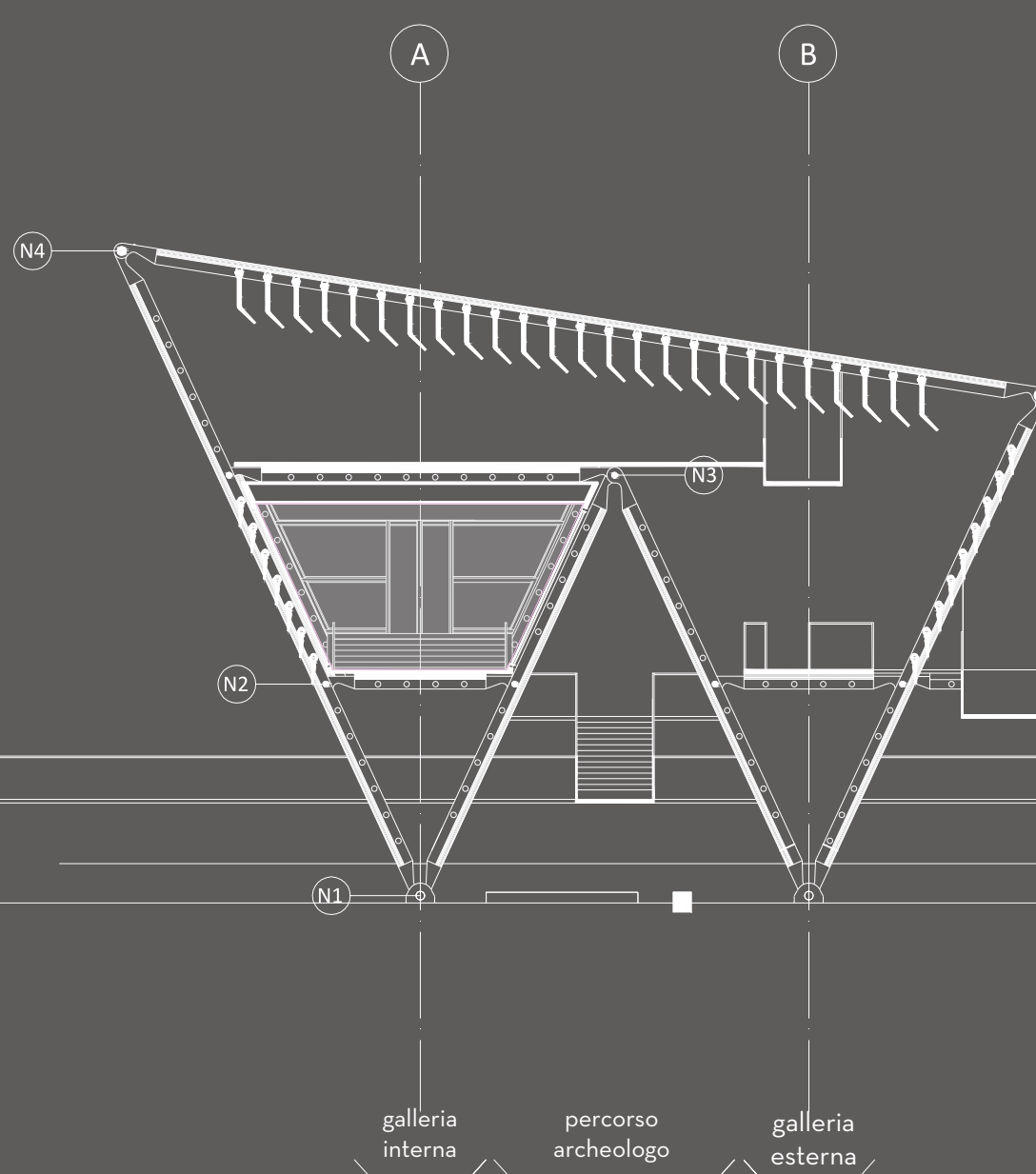


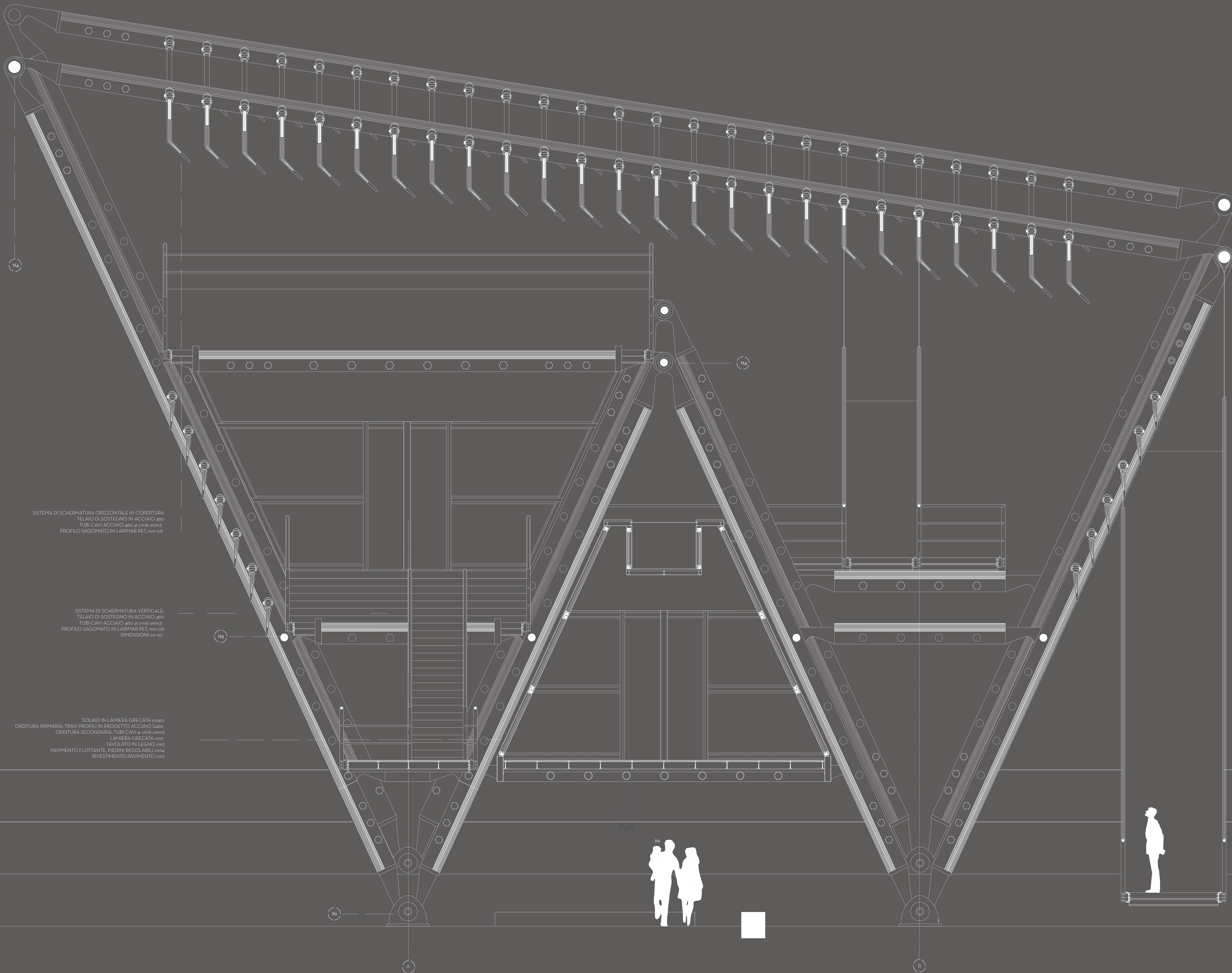


PROSPETTO A



PROSPETTO B



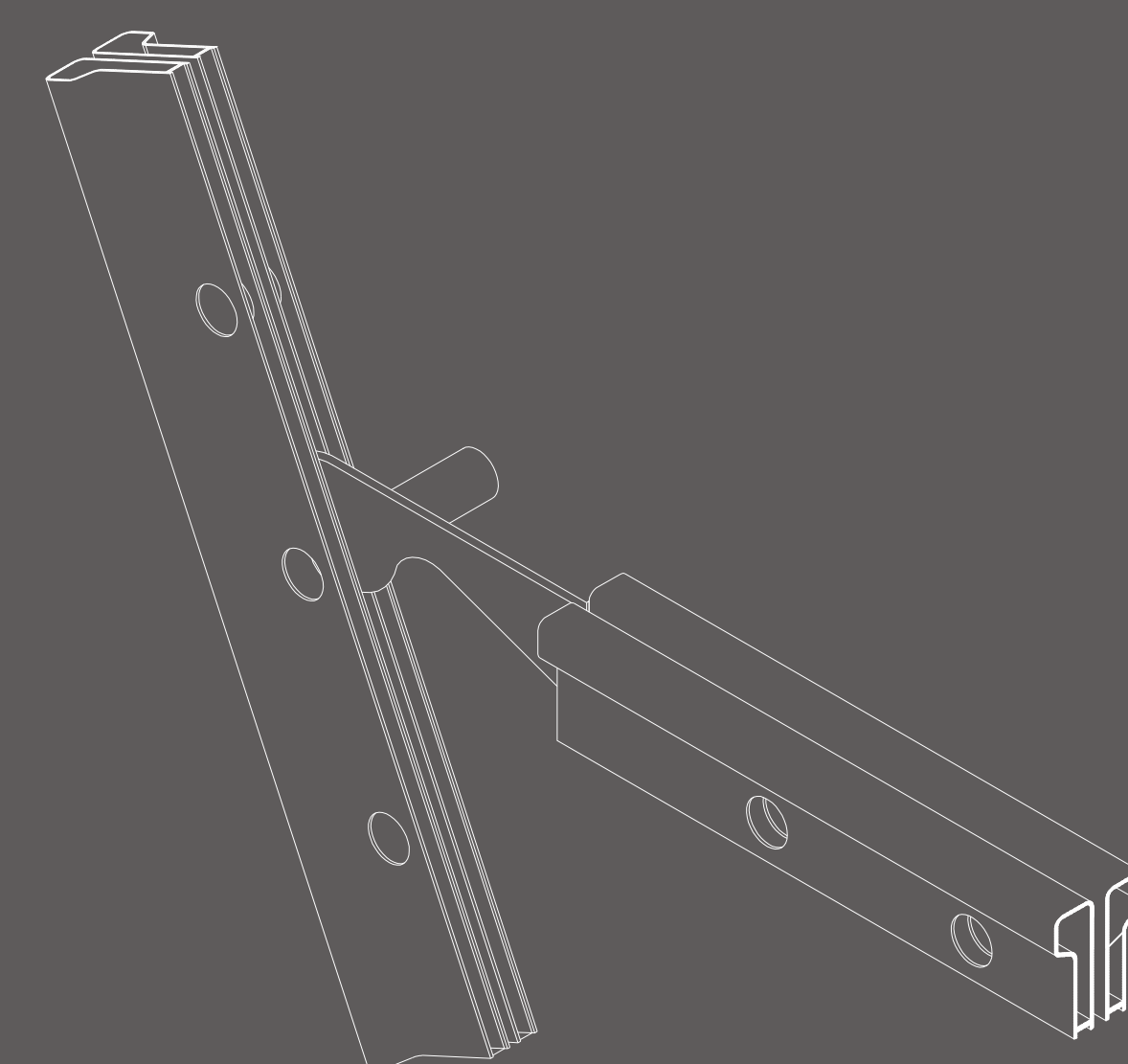
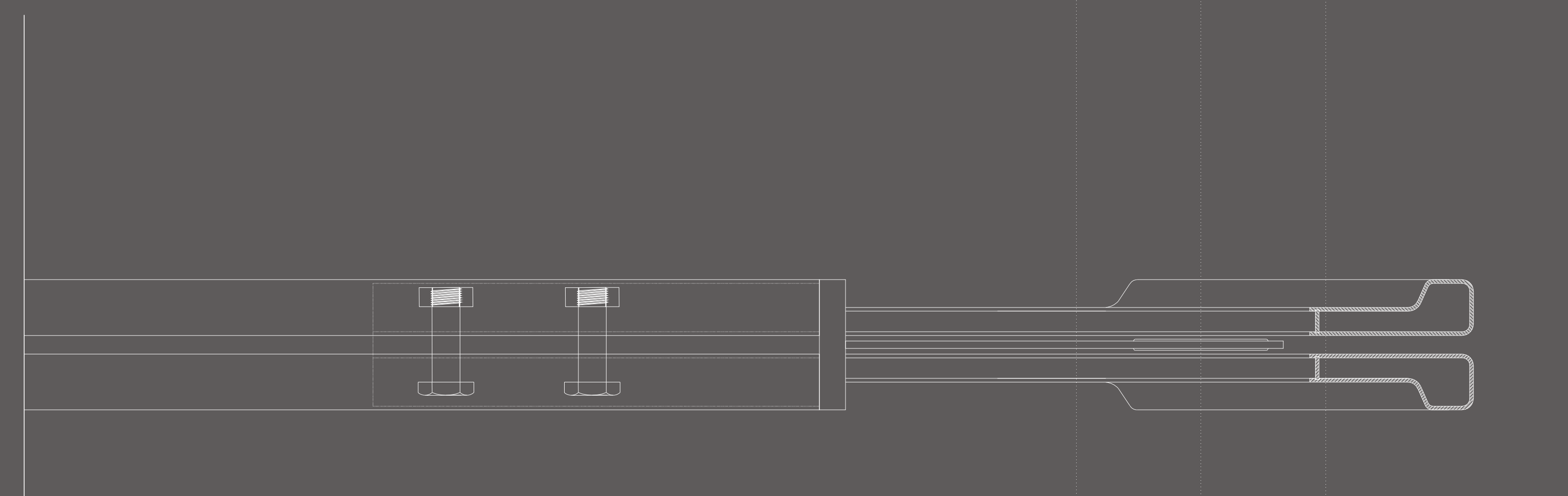
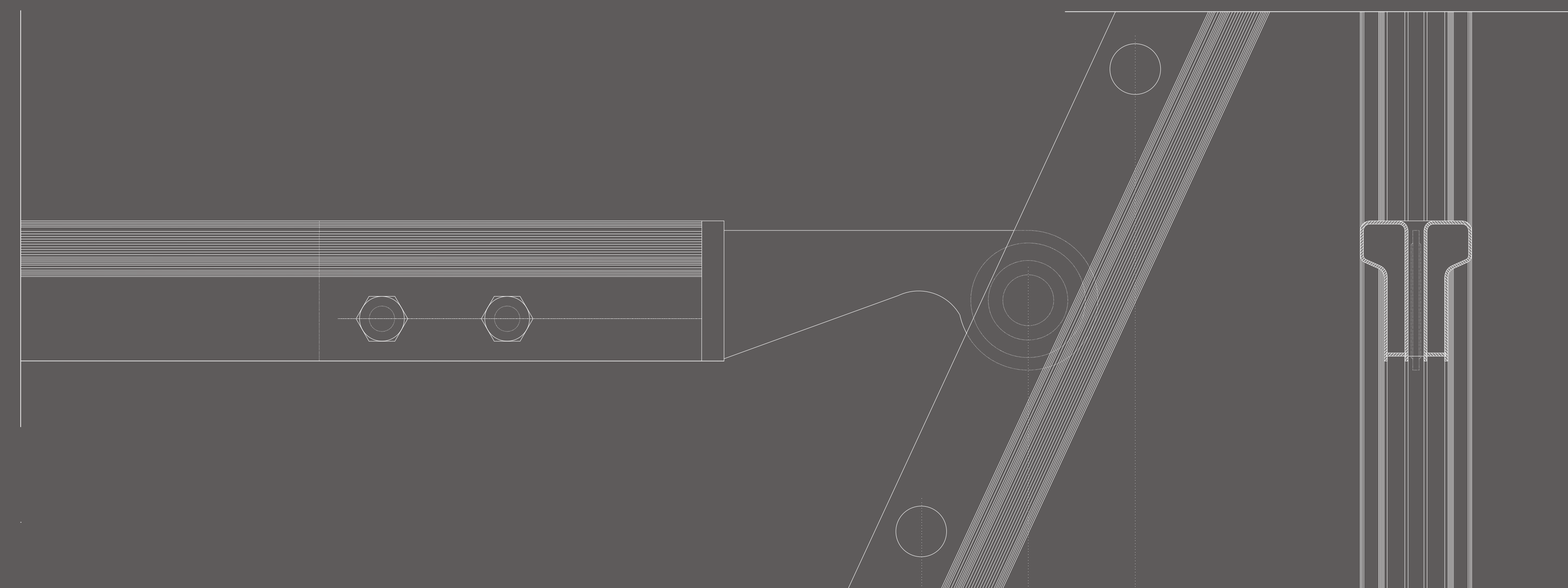
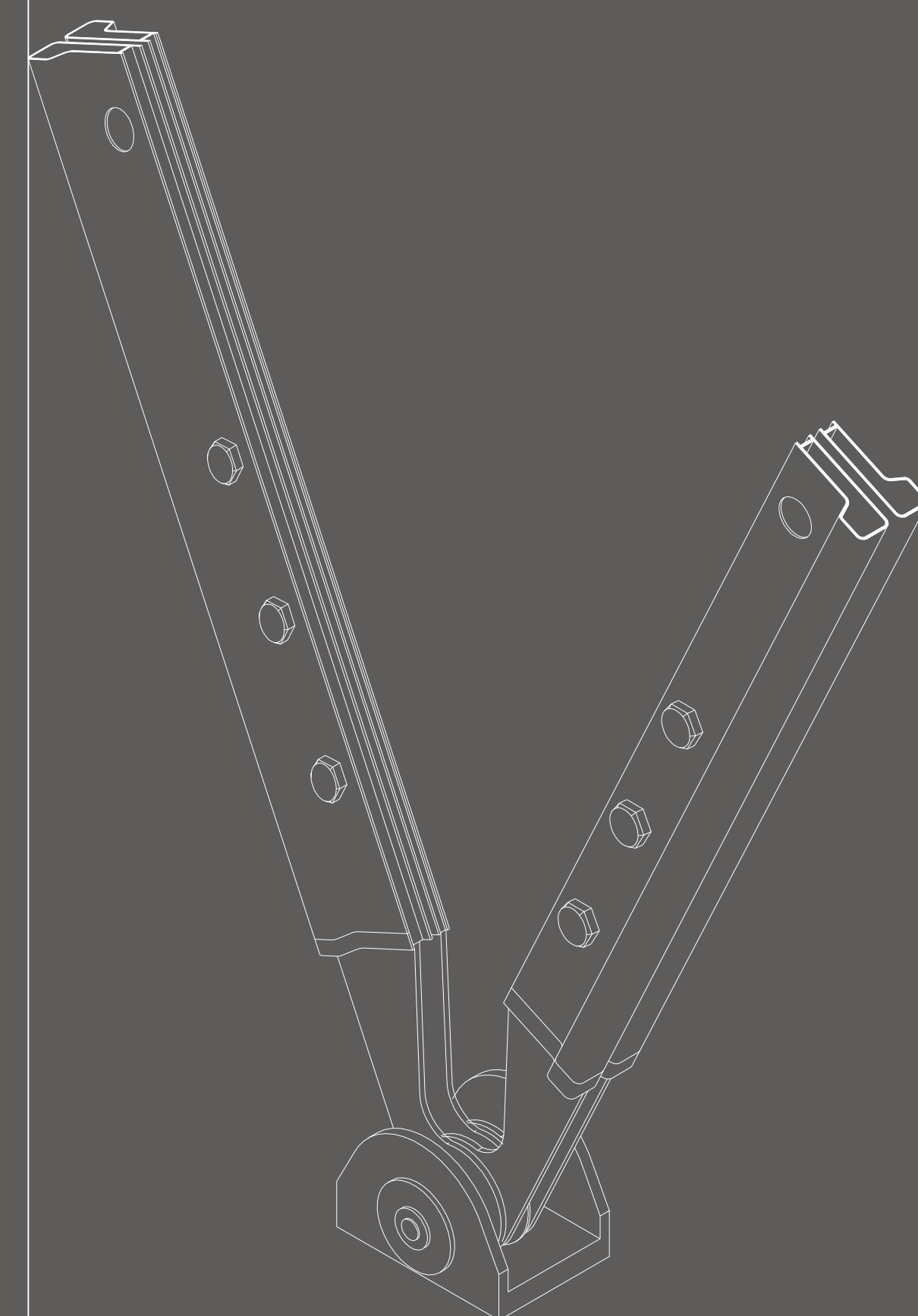
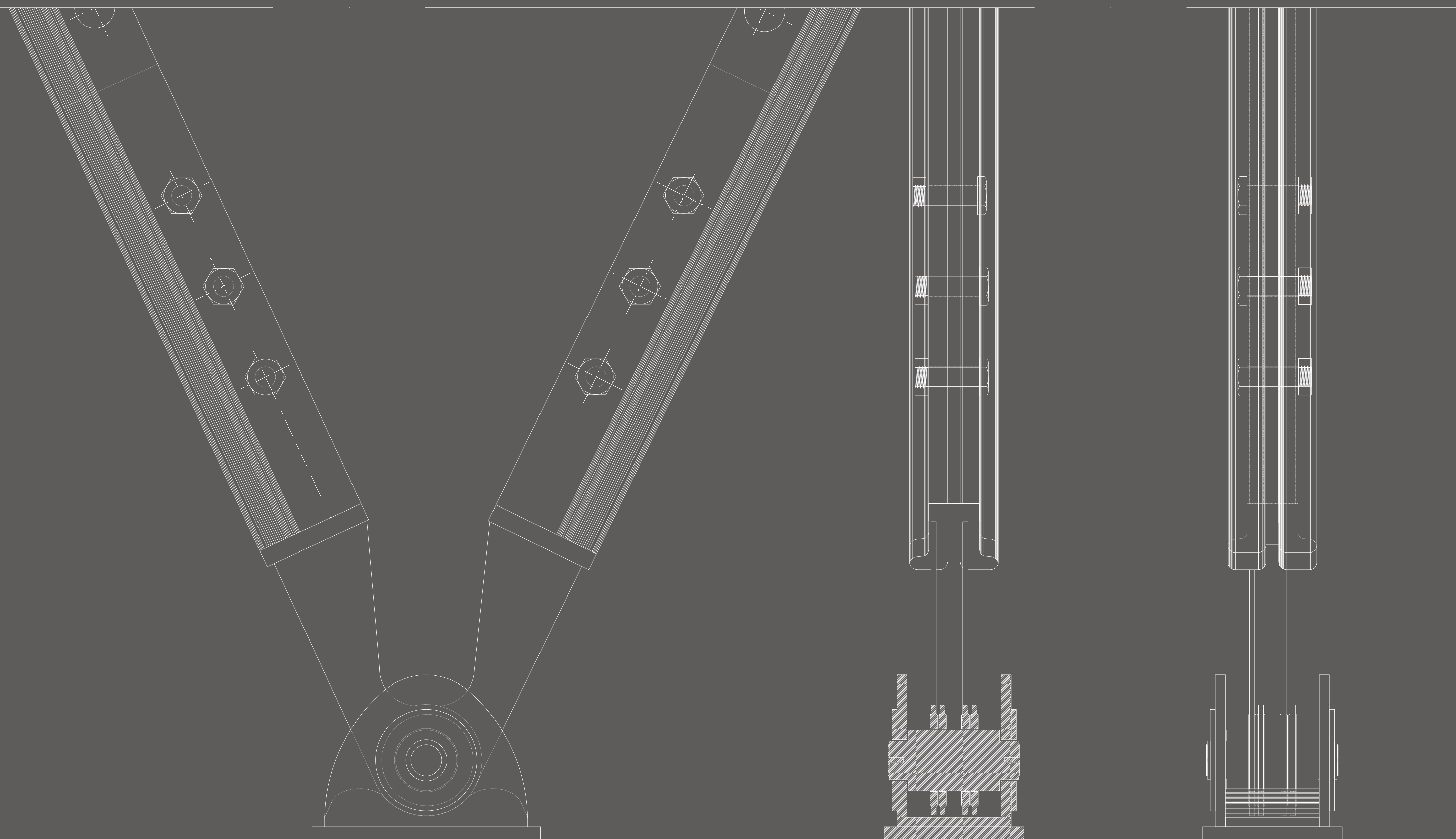
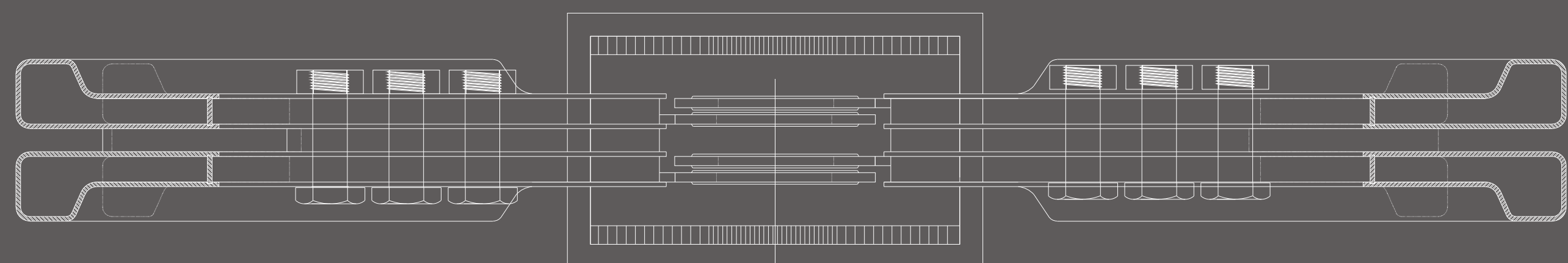


ELEMENTO DI CHIUSURA NODO 1 COPERTURA
s cm2 Ø cm215
ACCIAIO S460

DETTAGLIO GIUNZIONE ELEMENTO DEFINIZIONE TRAVE O PILASTRO
s cm2 Ø cm215
ACCIAIO S460
ANCORAGGIO VITE TESTA ESAGONALE FILETTO PARZIALE
DADO ESAGONALE

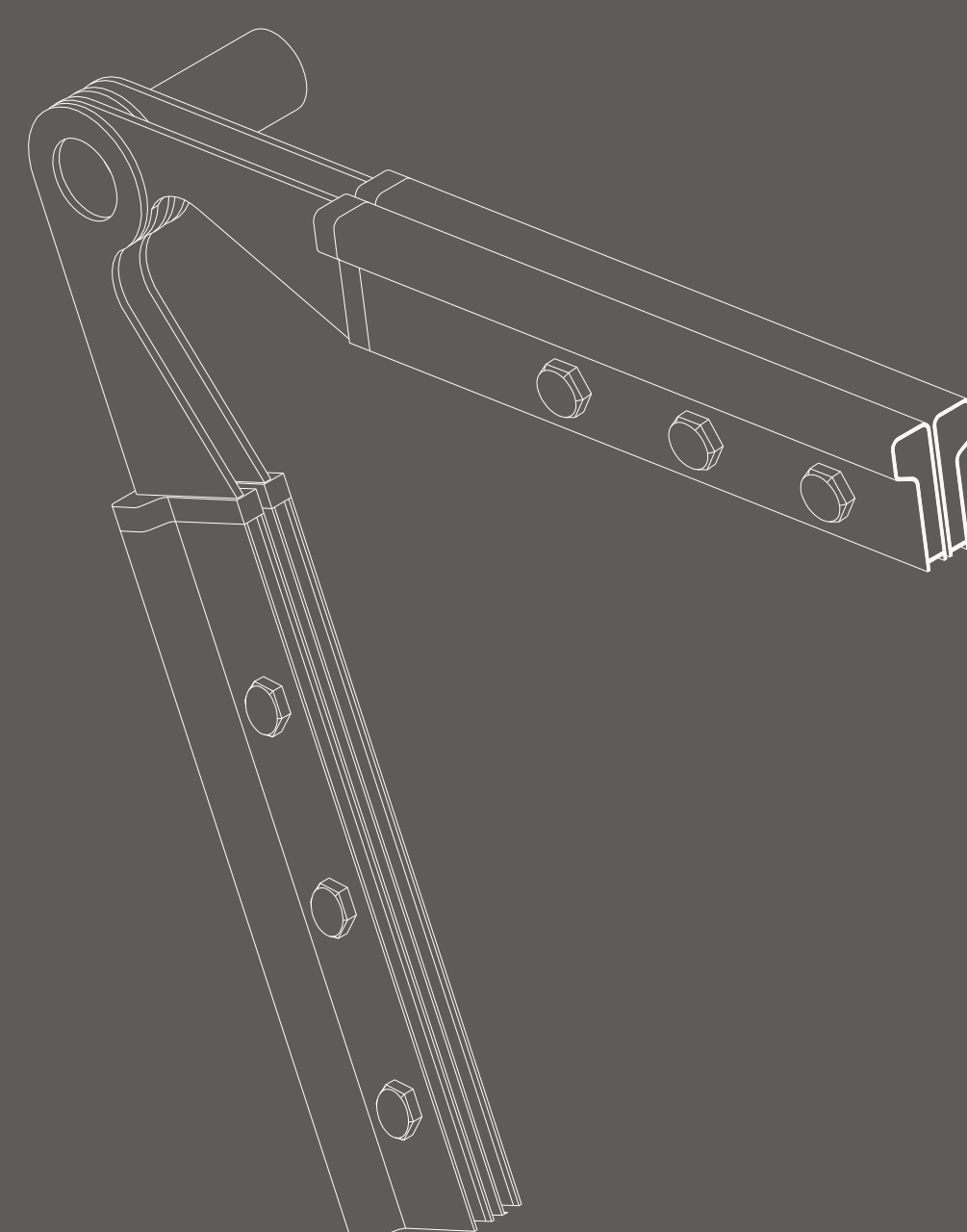
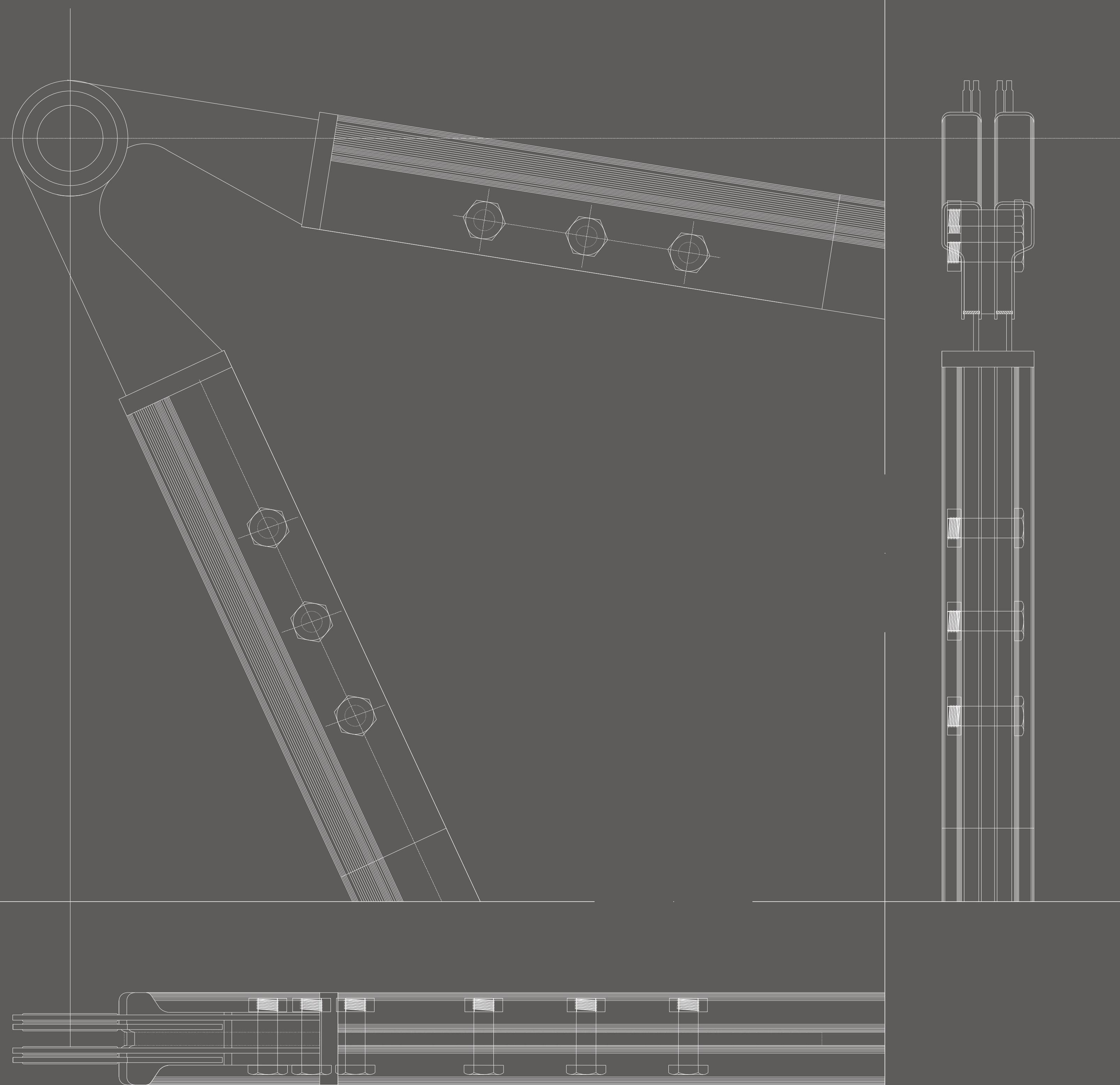
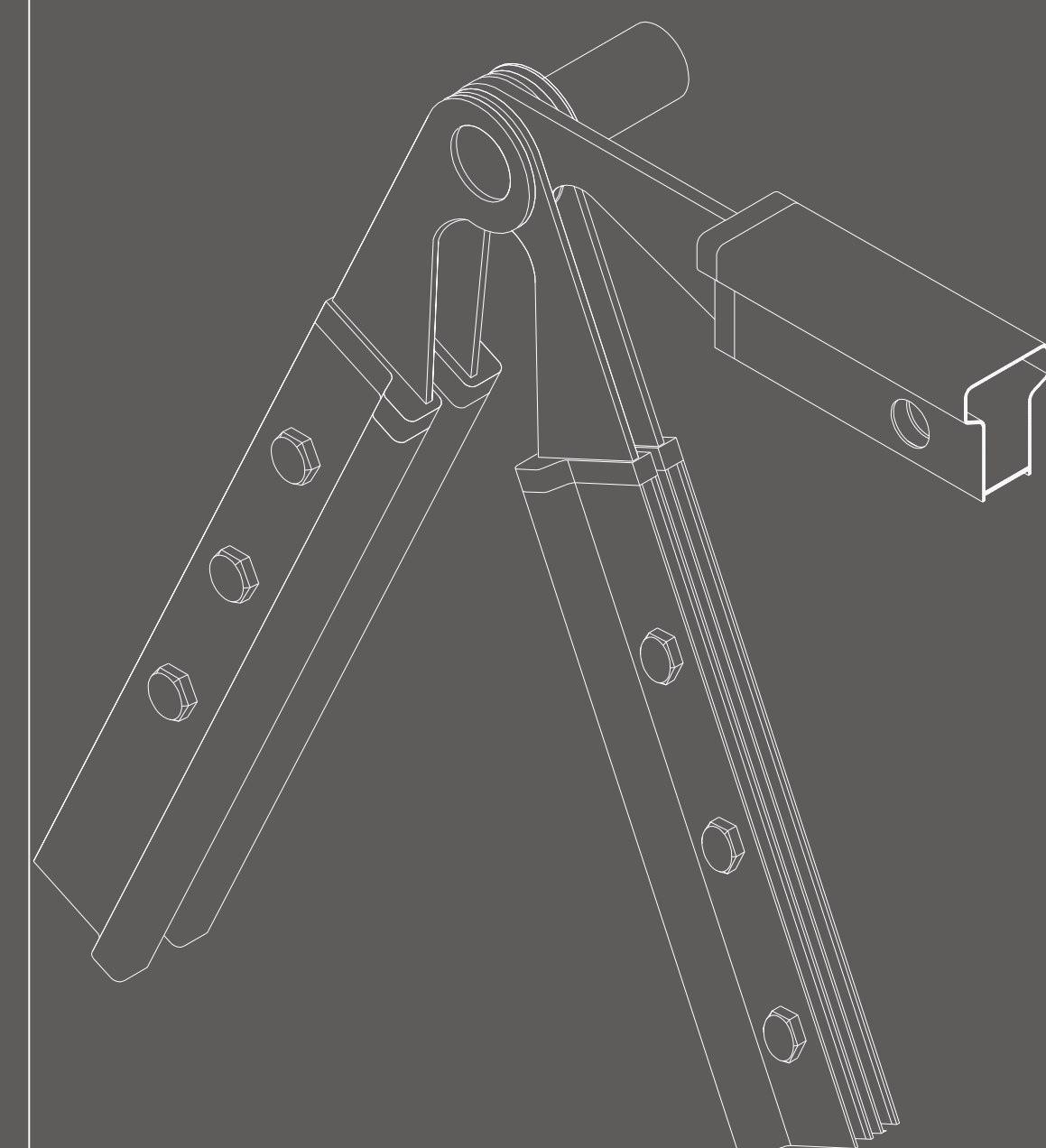
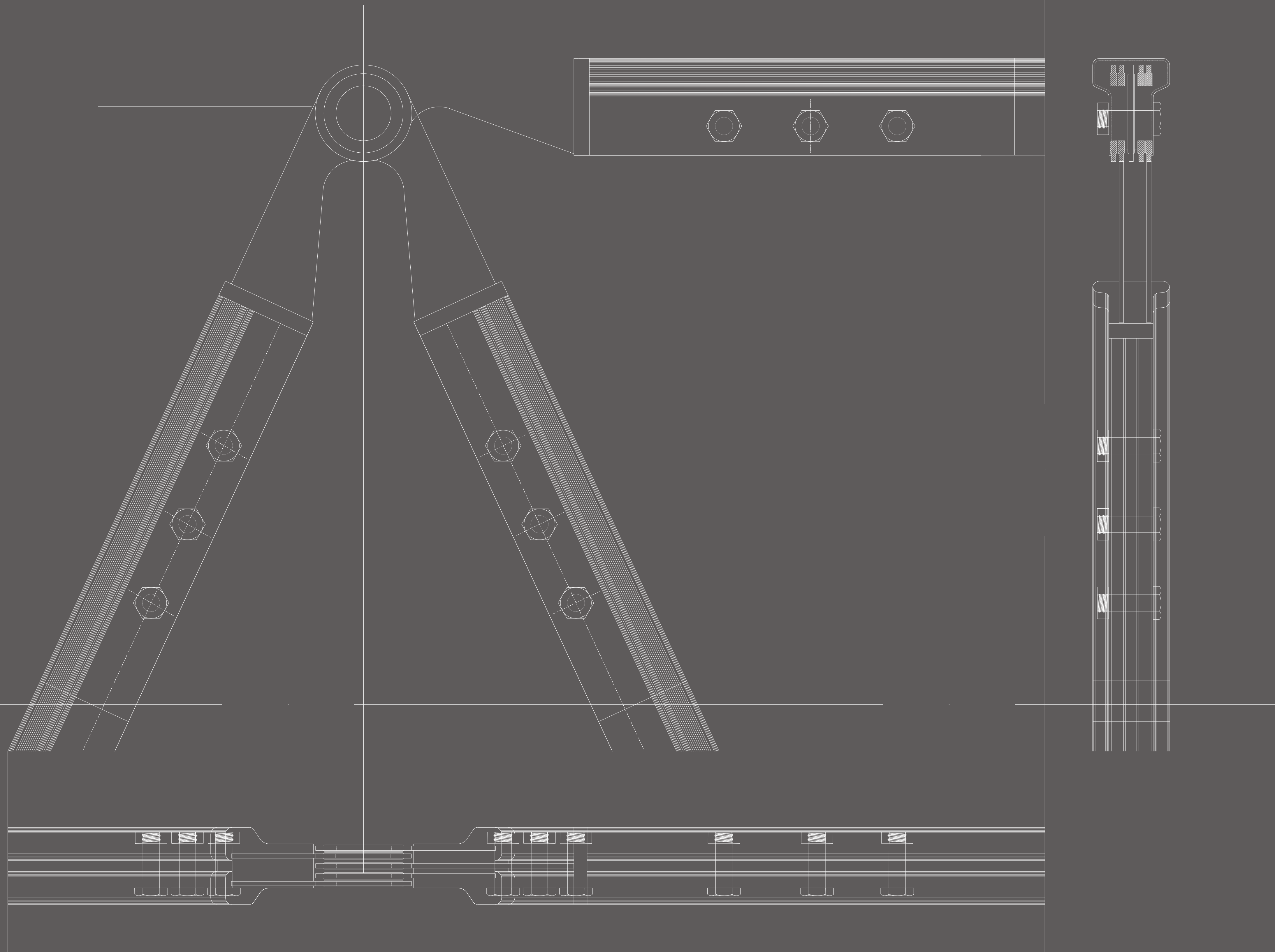
ELEMENTO DEFINIZIONE TRAVE O PILASTRO
s cm2 Ø cm215
ACCIAIO S460
ANCORAGGIO VITE TESTA ESAGONALE FILETTO PARZIALE
DADO ESAGONALE

PROFILO CHIUSO A SEZIONE CAVA
FORI Øcm 16 di cm80
ACCIAIO S 460



D2

NODI N1 N2 SCALA 1:10



D3

NODI N3 N6 SCALA 1:10