



Salto

Settori d'impiego:

uffici | ospedaliero | alberghiero | grande distribuzione | spettacolo | negozi |

Descrizione:

Pavimento vinilico autopesante in doghe e piastre a spigoli vivi, antistatico, stratificato, calandrato, superficie leggermente goffrata, stampato decori effetto legno e pietra. **Trattamento poliuretanico di superficie.**

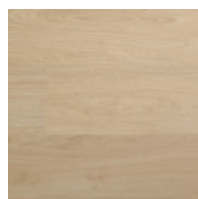
Traffico:

intenso

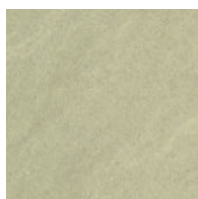
Composizione:

Strato d'usura: film vinilico trasparente, spessore mm. 0,70 ca. **Strato intermedio:** film vinilico stampato.

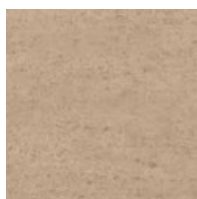
Supporto: strato compatto di PVC con rinforzo in fibra di vetro.



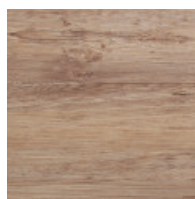
Oak-P 115



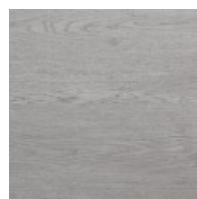
Limestone-T 208



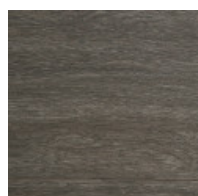
Natural Stone-T 261



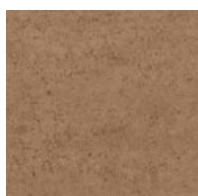
Easter Pine-P 150



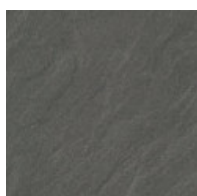
Traditional Oak-P 130



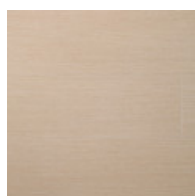
Panga-P 188



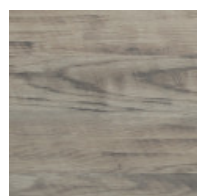
Aged Stone-T 262



Granite-T 250



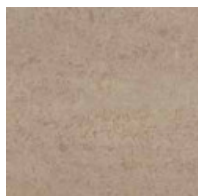
Ash-P 101



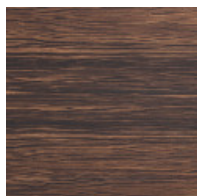
Butternut-P 160



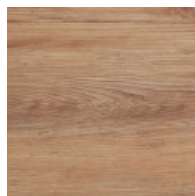
Smoked Oak-P 171



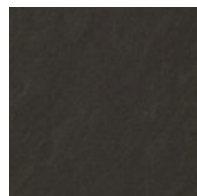
Weathered Stone-T
260



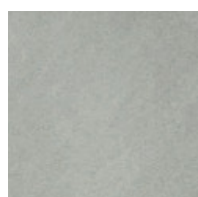
Zebrano-P 144



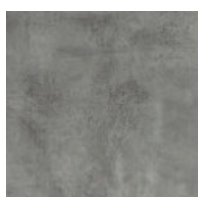
Hearth Pine-P 151



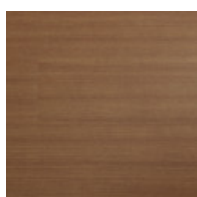
Clay-T 252



Sandstone-T 210



Soil-T 270



Mahagony-P 125

CARATTERISTICHE GENERALI DESCRIZIONE	
Resistenza all'impronta	EN 433 inferiore o uguale a 0,01 mm
Stabilità dimensionale	EN 434 inferiore o uguale a 0,15%
Flessibilità	EN 435 Conforme
Sedia a rotelle	idoneo
Comportamento antisdrucchiolo	DIN 51130 R10
Solidità colori alla luce	ISO 105 -B02 8
Reazione al fuoco	EN 13501-1 B _{fl} -s1
Comportamento elettrico	ANTISTATICO EN 1815 < 2KV
Peso	EN 430 8,022 kg/mq.
Spessore	Totale: EN 428. mm.5 Strato d'usura: EN 429:mm.0,7
Dimensioni e confezioni	EN 427: doghe: cm. 20x100, piastre: cm 50x50
Numero colori	18
Certificazioni	