



## EX-DONO WEAVE

**Settori d'impiego:**

uffici | alberghiero | negozi |

**Descrizione:**

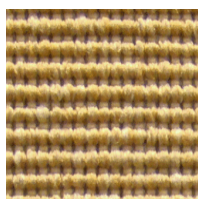
moquette in pezze bouclè tessute Flat Woven

**Traffico:**

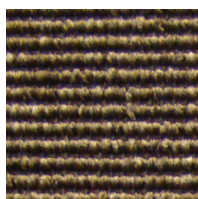
intenso

**Composizione:**

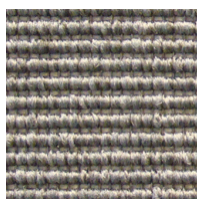
100% PA 6.6 Invista Antron Legacy. PA - PES ACTION BAC



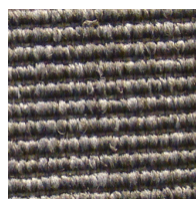
350100



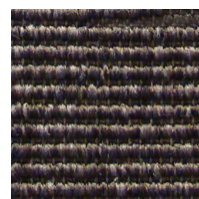
350200



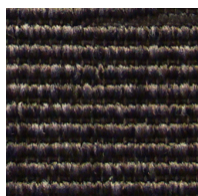
350300



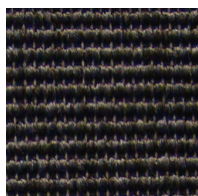
350320



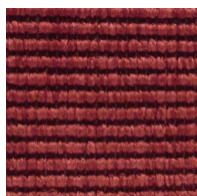
350350



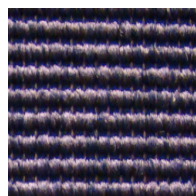
350380



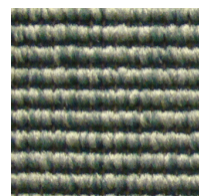
350390



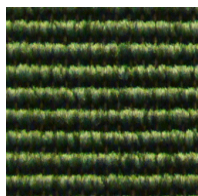
350600



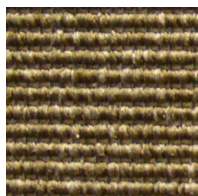
350650



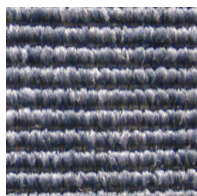
350700



350760



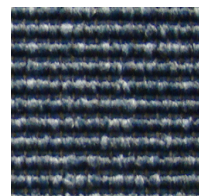
350780



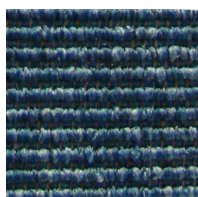
350800



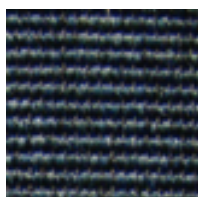
350840



350850



350870



350880

**CARATTERISTICHE GENERALI DESCRIZIONE**

<b>Classificazione d'uso</b>	EN 1307 : Cl. 33/4 Traffico pesante
<b>Sedia a rotelle</b>	idoneo
<b>Riduzione del rumore da calpestio</b>	ISO 140-8 15 dB (A)
<b>Assorbimento acustico</b>	ISO 354 Hz 125 250 500 1000 2000 4000 AS 0,01 0,01 0,03 0,14 0,23 0,11
<b>Isolamento termico</b>	0,06 mq. K/W
<b>Comportamento elettrico</b>	ISO 6356 inferiore o uguale a2 kV
<b>Pannelli radianti</b>	idoneo
<b>Reazione al fuoco</b>	EN 13501-1 C <sub>fl</sub> s1
<b>Peso felpa</b>	gr. 700/mq. ca.
<b>Peso totale</b>	gr. 2.200/mq. ca.
<b>Spessore felpa</b>	mm. 2,8 ca.
<b>Spessore totale</b>	mm. 3,5 ca.
<b>Numero punti</b>	112.000/mq. ca.
<b>Numero colori</b>	17
<b>Dimensioni</b>	altezza pezze cm. 400, lunghezza pezze ml. 27 ca.
<b>Note</b>	<b>NB:</b> con decreto del Ministero dell'interno del 16.02.2009 (Gazzetta Ufficiale nr. 48 del 27.08.2009) la Classificazione al fuoco C <sub>fl</sub> -s1 è stata aggiunta all'Art.4 punto A del Decreto Ministeriale del 15.03.2005. <b>Pertanto la Classe C<sub>fl</sub>-s1 è utilizzabile nelle vie di esodo e più precisamente: atri, corridoi, disimpegni, scale, rampe, passaggi in genere.</b>
<b>Certificazioni</b>	